



2023
CAMARO

Instant gratification.

Like pressing a joy button. The sixth-generation Camaro is like that and more. Sleek, fast and agile, whether the road is curved or straight. Its architecture is lightweight and ultra-strong, with an advanced 4-wheel independent suspension. Powertrain options range from a 2.0L Turbo all the way up to a 650-horsepower supercharged 6.2L V8. No matter what Camaro you choose, you'll find a beckoning road is a beautiful thing.



Camaro 2SS Coupe in Vivid Orange Metallic (extra-cost color) with available features.

At a glance.

- 4-passenger Coupe or Convertible
- Five models to choose from, including LS, LT, LT1, SS and ZL1
- Four available engines ranging from a 2.0L Turbo to a 650-horsepower supercharged 6.2L V8
- 4-wheel independent suspension
- Dual-outlet exhaust
- Chevrolet Infotainment 3 system¹
- Wireless Apple CarPlay^{®2} and wireless Android Auto^{™3} compatibility
- USB ports⁴ and auxiliary input jack
- Available Wi-Fi[®] Hotspot⁵
- Available wireless charging⁶
- Available safety features
 - Forward Collision Alert⁷
 - Lane Change Alert with Side Blind Zone Alert⁷
 - Rear Cross Traffic Alert⁷
- Available color Head-Up Display



Camaro 3LT Convertible in Sharkskin Metallic with available RS Package and other available features.



Camaro 3LT interior shown with available Ceramic White Interior Package and other available features.

¹ Chevrolet Infotainment System functionality varies by model. Full functionality requires compatible Bluetooth and smartphone, and USB connectivity for some devices. ² Vehicle user interface is a product of Apple and its terms and privacy statements apply. Requires compatible iPhone and data plan rates apply. ³ Vehicle user interface is a product of Google and its terms and privacy statements apply. To use Android Auto on your car display, you'll need an Android phone running Android 6 or higher, an active data plan, and the Android Auto app. ⁴ Not compatible with all devices. ⁵ Service varies with conditions and location. Requires active service and paid AT&T data plan. Visit onstar.com for details and limitations. ⁶ The system wirelessly charges one compatible mobile device. Some phones have built-in wireless charging technology and others require a special adaptor/back cover. To check for phone or other device compatibility, visit my.chevrolet.com/learn or consult your carrier. ⁷ Safety or driver assistance features are no substitute for the driver's responsibility to operate the vehicle in a safe manner. Read the vehicle Owner's Manual for important feature limitations and information.

Apple CarPlay, iPhone, Siri and Apple Music are trademarks of Apple Inc., registered in the U.S. and other countries. Android, Google Play and Android Auto are trademarks of Google LLC.

DEALER ePROCESS

Due to current supply chain shortages, certain features shown have limited or late availability, or are no longer available. See the window label or a dealer regarding the features on an individual vehicle.

Five models to choose from.



LS

Welcome to an exclusive club.

- 275-horsepower 2.0L Turbo engine offers 0 to 60 mph in 5.4 seconds¹
- 6-speed manual transmission
- Power-adjustable mirrors
- Dual-outlet exhaust with bright tips
- 18-inch Silver-painted aluminum wheels



LT

Open up your performance possibilities.

- 2.0L Turbo or available 3.6L V6 engine
- 6-speed manual transmission
- Available 8-speed paddle-shift automatic transmission with 2.0L Turbo engine or 10-speed paddle-shift automatic transmission with 3.6L V6 engine
- Safety technology on 3LT includes Forward Collision Alert², Lane Change Alert with Side Blind Zone Alert² and Rear Cross Traffic Alert²
- Available 20-inch aluminum wheels

Shock and Steel Special Edition available

Redline Edition available

RS Package available

Design Package 1 available

Design Package 2 available

Design Package 3 available



LT1

There's nothing like the element of surprise.

- 455-horsepower 6.2L V8 engine, shared with Camaro SS
- 6-speed manual transmission with Active Rev Matching
- Available 10-speed paddle-shift automatic transmission
- External engine oil cooler
- Limited-slip differential
- Performance suspension
- Black bowtie emblems
- SS-style engine hood
- LT1 fender badging
- 20-inch Silver-painted aluminum wheels (paired with all-season tires)

Redline Edition available

RS Package available

Design Package 1 available

Design Package 2 available

Design Package 3 available



¹ Based on initial vehicle movement. ² Safety or driver assistance features are no substitute for the driver's responsibility to operate the vehicle in a safe manner. Read the vehicle Owner's Manual for important feature limitations and information.

Five models to choose from.



SS

The soul of Camaro performance.

- 455-horsepower 6.2L V8 engine
 - 6-speed manual transmission with Active Rev Matching
 - Available 10-speed paddle-shift automatic transmission
 - Brembo® brakes with 4-piston calipers
 - 20-inch Silver-painted aluminum wheels (paired with staggered summer-only tires¹)
 - Available Magnetic Ride Control™
 - Available performance copper-free brake system² with Brembo 6-piston front and 4-piston rear brake calipers
- SS 1LE Track Performance Package available
Shock and Steel Special Edition available
Redline Edition available
Design Package 1 available
Design Package 2 available
Design Package 3 available

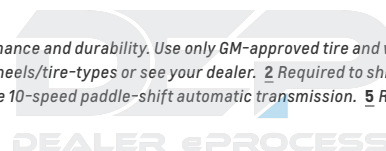


ZL1

The most powerful production Camaro ever built.

- 650-horsepower supercharged 6.2L V8
 - Top track speed of 198 mph³
 - 0 to 60 mph in 3.5 seconds⁴
 - Magnetic Ride Control
 - Brembo 6-piston front and 4-piston rear brake calipers
 - Auxiliary engine cooler
 - Rear differential cooler
 - Transmission oil cooler
 - Dual-mode performance exhaust
 - 20-inch Dark Graphite-painted forged-aluminum wheels
 - Goodyear Eagle® F1 SuperCar® G:2 staggered summer-only tires¹
 - Custom launch control with line lock⁵
 - RECARO® performance seats
 - Available performance copper-free brake system²
- ZL1 1LE Extreme Track Performance Package available

¹ Do not use summer-only tires in winter conditions, as it would adversely affect vehicle safety, performance and durability. Use only GM-approved tire and wheel combinations. Unapproved combinations may change the vehicle's performance characteristics. For important tire and wheel information, go to chevrolet.com/support/vehicle/driving-safety/tires-wheels/tire-types or see your dealer. ² Required to ship to states of California and Washington on SS and ZL1. ³ Coupe models with available 10-speed paddle-shift automatic transmission. ⁴ Based on initial vehicle movement. Coupe models with available 10-speed paddle-shift automatic transmission. ⁵ Requires available 10-speed paddle-shift automatic transmission.



1LS



Summit White



Sharkskin Metallic



Shadow Gray Metallic



Red Hot



Radiant Red Tintcoat¹



Vivid Orange Metallic¹



Rapid Blue¹



Riverside Blue Metallic



Black

¹Extra-cost color.



1LS



Available on Coupe. Select standard features include:

MECHANICAL

Engine – 2.0L turbocharged DOHC 4-cylinder with Variable Valve Timing and Direct Injection

Driver Mode Selector – three modes: Snow/Ice, Tour and Sport

Exhaust system – dual-outlet stainless steel with bright tips

Suspension – 4-wheel independent, Sport (FE2)

Transmission – 6-speed manual with Hill Hold feature

EXTERIOR

Headlamps – LED with LED signature and automatic on/off

Mirrors – power-adjustable, manual-folding with body-color caps

INTERIOR

Air conditioning – automatic, single-zone

Cruise control – electronic with Set and Resume Speed

Driver Information Center – color display with compass

Entertainment – Chevrolet Infotainment 3 system¹ with 7-inch diagonal color touch-screen

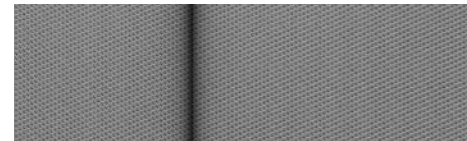
Keyless Open and Start – includes extended-range Remote Keyless Entry and panic feature

Seats – front buckets with driver 8-way power adjuster; front passenger 4-way manual adjuster with power recline

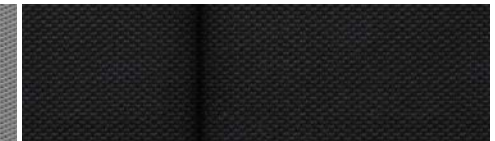
Steering column – manual tilt and telescopic

Steering wheel – leather-wrapped flat-bottom with mounted audio, cruise and phone controls

Theft-deterrent system – unauthorized entry



Medium Ash Gray Cloth (shown)



Jet Black Cloth

STANDARD WHEELS



18" x 8.5" Front and Rear
5-Split-Spoke Silver-Painted
Aluminum Wheels

¹ Chevrolet Infotainment System functionality varies by model. Full functionality requires compatible Bluetooth and smartphone, and USB connectivity for some devices.

LT



Summit White



Sharkskin Metallic



Shadow Gray Metallic



Red Hot



Radiant Red Tintcoat¹



Vivid Orange Metallic¹



Rapid Blue¹



Riverside Blue Metallic



Black

¹Extra-cost color.



1LT



Available on Coupe and Convertible. Select standard features include:

MECHANICAL

Engine – 2.0L turbocharged DOHC 4-cylinder with Variable Valve Timing and Direct Injection

Driver Mode Selector – three modes: Snow/Ice, Tour and Sport

Exhaust system – dual-outlet stainless steel with bright tips

Suspension – 4-wheel independent, Sport (FE2)

Transmission – 6-speed manual with Hill Hold feature

EXTERIOR

Headlamps – LED with LED signature and automatic on/off

Mirrors – power-adjustable, manual-folding with body-color caps

INTERIOR

Air conditioning – automatic, single-zone

Cruise control – electronic with Set and Resume Speed

Driver Information Center – color display with compass

Entertainment – Chevrolet Infotainment 3 system¹ with 7-inch diagonal color touch-screen

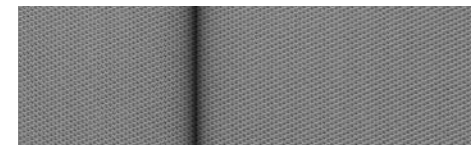
Keyless Open and Start – includes extended-range Remote Keyless Entry and panic feature

Seats – front buckets with driver 8-way power adjuster; front passenger 6-way power adjuster

SiriusXM^{®2} – 12-month trial subscription to SXM Platinum Plan

Steering column – manual tilt and telescopic

Steering wheel – leather-wrapped flat-bottom with mounted audio, cruise and phone controls



Medium Ash Gray Cloth (shown)



RECARO[®] Performance Seats with Jet Black Leather Appointments and Perforated Sueded Microfiber Inserts



Jet Black Cloth

¹ Chevrolet Infotainment System functionality varies by model. Full functionality requires compatible Bluetooth and smartphone, and USB connectivity for some devices. ² If you decide to continue service after your trial, your selected subscription plan will automatically renew thereafter. You will be charged at then-current rates. Fees and taxes apply. To cancel you must call SiriusXM at 1-866-635-2349. See SiriusXM Customer Agreement for complete terms at siriusxm.com. All fees and programming subject to change.

2LT & 3LT



2LT available on Coupe and Convertible. In addition to or replacing 1LT features, 2LT includes:

INTERIOR

Air conditioning – automatic, dual-zone with individual climate settings

Seating – heated and ventilated front seats with perforated leather-appointed seating surfaces

3LT available on Coupe and Convertible. In addition to or replacing 2LT features, 3LT includes:

EXTERIOR

Mirrors – heated, power-adjustable, manual-folding with body-color caps and driver-side auto-dimming feature

INTERIOR

Audio – Bose premium 9-speaker (Coupe) or 7-speaker (Convertible) audio system

Driver Information Center – enhanced 8-inch diagonal reconfigurable multi-color display with compass

Entertainment – Chevrolet Infotainment 3 Plus system¹ with 8-inch diagonal HD color touch-screen

Head-Up Display – color digital display with readouts for vehicle speed, tachometer, selected gear, g force, high beam indicator, turn signals, outside air temperature, audio system, turn-by-turn directions and phone information

Lighting – interior spectrum with 24 different color selections

Memory settings – recalls two presets for power driver seat and outside rearview mirrors

Rear Camera Mirror² – auto-dimming

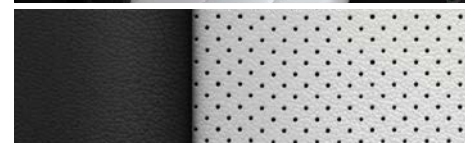
Safety and driver assistance features² – Forward Collision Alert (Coupe), Lane Change Alert with Side Blind Zone Alert and Rear Cross Traffic Alert

Sill plates – illuminated

SiriusXM[®] with 360L³ – 12-month trial subscription to SXM Platinum Plan

Steering wheel – leather-wrapped flat-bottom with mounted audio, cruise and phone controls; heated

Wireless charging⁴



Ceramic White Leather-Appointed Front Seats with Perforated Inserts and Jet Black Accents (shown)⁵



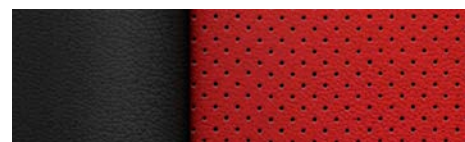
RECARO[®] Performance Seats with Jet Black Leather Appointments and Perforated Sueded Microfiber Inserts



Medium Ash Gray Leather-Appointed Front Seats with Perforated Inserts



Jet Black Leather-Appointed Front Seats with Perforated Inserts



Adrenaline Red Leather-Appointed Front Seats with Perforated Inserts and Jet Black Accents⁶

¹ Chevrolet Infotainment System functionality varies by model. Full functionality requires compatible Bluetooth and smartphone, and USB connectivity for some devices. ² Safety or driver assistance features are no substitute for the driver's responsibility to operate the vehicle in a safe manner. Read the vehicle Owner's Manual for important feature limitations and information. ³ If you decide to continue service after your trial, your selected subscription plan will automatically renew thereafter. You will be charged at then-current rates. Fees and taxes apply. To cancel you must call SiriusXM at 1-866-635-2349. See SiriusXM Customer Agreement for complete terms at siriusxm.com. All fees and programming subject to change. Certain features require a SiriusXM subscription and the Chevrolet Connected Access plan. See siriusxm.com and onstar.com for details and limitations. ⁴ The system wirelessly charges one compatible mobile device. Some phones have built-in wireless charging technology and others require a special adaptor/back cover. To check for phone or other device compatibility, see my.chevrolet.com/learn or consult your carrier. ⁵ Requires available Ceramic White Interior Package. ⁶ Requires available Adrenaline Red Interior Package.

DEALER ePROCESS

Some features shown may have limited, late or no availability. See dealer for feature availability.

LT

STANDARD WHEELS



18" x 8.5" Front and Rear
5-Spoke Silver-Painted
Aluminum Wheels

AVAILABLE WHEELS



20" x 8.5" Front and Rear
5-Spoke Carbon Flash-Painted
Aluminum Wheels



20" x 8.5" Front and Rear
5-Split-Spoke Bright
Silver-Painted Aluminum Wheels
Available with RS Package



20" x 8.5" Front and Rear
5-Split-Spoke Premium Gray-Painted
Machined-Face Aluminum Wheels
Available with RS Package



20" x 8.5" Front and Rear
5-Split-Spoke Black
Forged-Aluminum Wheels
Available with RS Package



20" x 8.5" Front and Rear
5-Split-Spoke Polished
Forged-Aluminum Wheels with
Black Star Center Cap
Available with RS Package



20" x 8.5" Front and Rear
5-Split-Spoke Polished
Forged-Aluminum Wheels with
Camaro Logo Center Cap
Available with RS Package and
Design Package 1, Design Package 2
or Design Package 3



20" x 8.5" Front and Rear
Black-Painted Aluminum Wheels
with Red Accents
Available with Redline Edition



20" x 8.5" Front and Rear
Blade-Design Aluminum Wheels
Available with Shock and
Steel Special Edition

LT1



Summit White



Sharkskin Metallic



Shadow Gray Metallic



Red Hot



Radiant Red Tintcoat¹



Vivid Orange Metallic¹



Rapid Blue¹



Riverside Blue Metallic



Black

¹Extra-cost color.



LT1



Available on Coupe and Convertible. Select standard features include:

MECHANICAL

Engine – 6.2L LT1 V8 with Variable Valve Timing and Direct Injection

Cooling – external engine oil cooler

Driver Mode Selector – three modes: Snow/Ice, Tour and Sport

Exhaust system – dual-outlet stainless steel with bright tips

Suspension – 4-wheel independent, Performance (FE3)

Transmission – 6-speed manual with Hill Hold feature and Active Rev Matching

EXTERIOR

Chevrolet bowtie emblems – Black front and rear

Engine hood – SS-style with functional air extractor

Headlamps – LED with LED signature and automatic on/off

Mirrors – power-adjustable, manual-folding with body-color caps

INTERIOR

Air conditioning – automatic, single-zone

Cruise control – electronic with Set and Resume Speed

Driver Information Center – color display with compass

Entertainment – Chevrolet Infotainment 3 system¹ with 7-inch diagonal color touch-screen

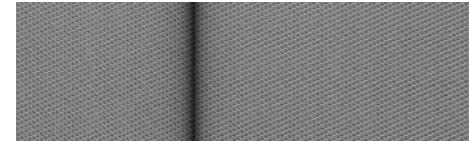
Keyless Open and Start – includes extended-range Remote Keyless Entry and panic feature

Seats – front buckets with driver 8-way power adjuster; front passenger 6-way power adjuster

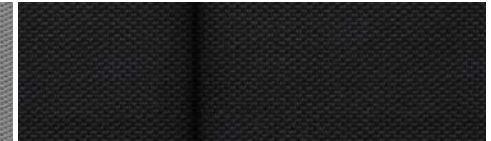
SiriusXM^{®2} – 12-month trial subscription to SXM Platinum Plan

Steering column – manual tilt and telescopic

Steering wheel – leather-wrapped flat-bottom with mounted audio, cruise and phone controls



Medium Ash Gray Cloth (shown)



RECARO[®] Performance Seats with Jet Black Leather Appointments and Perforated Sueded Microfiber Inserts



Jet Black Cloth

¹ Chevrolet Infotainment System functionality varies by model. Full functionality requires compatible Bluetooth and smartphone, and USB connectivity for some devices. ² If you decide to continue service after your trial, your selected subscription plan will automatically renew thereafter. You will be charged at then-current rates. Fees and taxes apply. To cancel you must call SiriusXM at 1-866-635-2349. See SiriusXM Customer Agreement for complete terms at siriusxm.com. All fees and programming subject to change.

LT1

STANDARD WHEELS



20" x 8.5" Front and Rear
5-Spoke Silver-Painted
Aluminum Wheels

AVAILABLE WHEELS



20" x 8.5" Front and Rear
5-Spoke Carbon Flash-Painted
Aluminum Wheels



20" x 8.5" Front and Rear
5-Split-Spoke Bright
Silver-Painted Aluminum Wheels



20" x 8.5" Front and Rear
5-Split-Spoke Premium Gray-Painted
Machined-Face Aluminum Wheels



20" x 8.5" Front and Rear
5-Split-Spoke Black
Forged-Aluminum Wheels



20" x 8.5" Front and Rear
5-Split-Spoke Polished
Forged-Aluminum Wheels with
Black Star Center Cap



20" x 8.5" Front and Rear
5-Split-Spoke Polished
Forged-Aluminum Wheels with
Camaro Logo Center Cap
Available with RS Package and
Design Package 1, Design Package 2
or Design Package 3



20" x 8.5" Front and Rear
Black-Painted Aluminum Wheels
with Red Accents
Available with Redline Edition

SS



Summit White



Sharkskin Metallic



Shadow Gray Metallic



Red Hot



Radiant Red Tintcoat¹



Vivid Orange Metallic¹



Rapid Blue¹



Riverside Blue Metallic



Black

¹Extra-cost color.



1SS



Available on Coupe and Convertible. Select standard features include:

MECHANICAL

Engine – 6.2L LT1 V8 with Variable Valve Timing and Direct Injection

Cooling – extra-capacity cooling system and transmission oil cooler (requires available automatic transmission on Convertible)
– auxiliary engine coolant cooler and rear differential oil cooler (Coupe)

Driver Mode Selector – four modes: Snow/Ice, Tour, Sport and Track

Suspension – 4-wheel independent, Performance (FE3)

Transmission – 6-speed manual with Hill Hold feature and Active Rev Matching

EXTERIOR

Headlamps – LED with LED signature and automatic on/off

Mirrors – power-adjustable, manual-folding with body-color caps

Spoiler – rear, stanchion

INTERIOR

Air conditioning – automatic, single-zone

Cruise control – electronic with Set and Resume Speed

Driver Information Center – enhanced 8-inch diagonal reconfigurable multi-color display with compass

Entertainment – Chevrolet Infotainment 3 Plus system¹ with 8-inch diagonal HD color touch-screen

HD Rear Vision Camera²

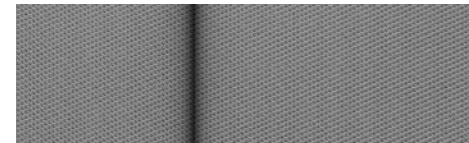
Keyless Open and Start – includes extended-range Remote Keyless Entry and panic feature

Seats – front buckets with driver 8-way power adjuster; front passenger 6-way power adjuster

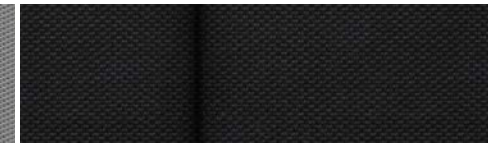
SiriusXM[®] with 360L³ – 12-month trial subscription to SXM Platinum Plan

Steering column – manual tilt and telescopic

Steering wheel – leather-wrapped flat-bottom with mounted audio, cruise and phone controls



Medium Ash Gray Cloth (shown)



RECARO[®] Performance Seats with Jet Black Leather Appointments and Perforated Sueded Microfiber Inserts



Jet Black Cloth

¹ Chevrolet Infotainment System functionality varies by model. Full functionality requires compatible Bluetooth and smartphone, and USB connectivity for some devices. ² Safety or driver assistance features are no substitute for the driver's responsibility to operate the vehicle in a safe manner. Read the vehicle Owner's Manual for important feature limitations and information. ³ If you decide to continue service after your trial, your selected subscription plan will automatically renew thereafter. You will be charged at then-current rates. Fees and taxes apply. To cancel you must call SiriusXM at 1-866-635-2349. See SiriusXM Customer Agreement for complete terms at siriusxm.com. All fees and programming subject to change. Certain features require a SiriusXM subscription and the Chevrolet Connected Access plan. See siriusxm.com and onstar.com for details and limitations.

2SS



Available on Coupe and Convertible. In addition to or replacing 1SS features, 2SS includes:

EXTERIOR

Mirrors – heated, power-adjustable, manual-folding with body-color caps and driver-side auto-dimming feature

INTERIOR

Accents – aluminum accents on door trim and shifter cap

Air conditioning – automatic, dual-zone with individual climate settings

Audio – Bose premium 9-speaker (Coupe) or 7-speaker (Convertible) audio system

Forward Collision Alert¹ (Coupe; removed when available Performance Data Recorder is ordered)

Head-Up Display – color digital display with readouts for vehicle speed, tachometer, selected gear, g force, high beam indicator, turn signals, outside air temperature, audio system, turn-by-turn directions and phone information

Lane Change Alert with Side Blind Zone Alert¹

Lighting – interior spectrum with 24 different color selections

Memory settings – recalls two presets for power driver seat and outside rearview mirrors

Rear Camera Mirror¹ – auto-dimming

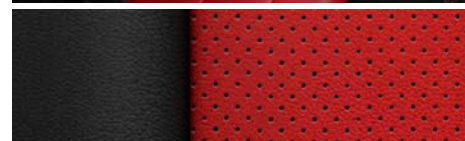
Rear Cross Traffic Alert¹

Seating – heated and ventilated front seats with perforated leather-appointed seating surfaces

Sill plates – illuminated

Steering wheel – leather-wrapped flat-bottom with mounted audio, cruise and phone controls; heated

Wireless charging²



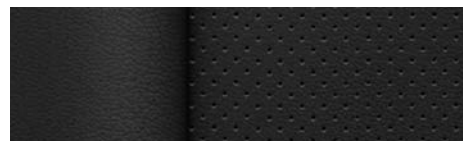
Adrenaline Red Leather-Appointed Front Seats with Perforated Inserts and Jet Black Accents (shown)³



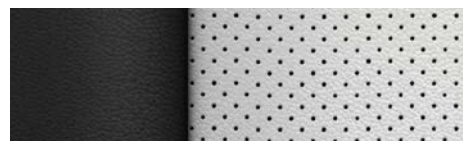
RECARO[®] Performance Seats with Jet Black Leather Appointments and Perforated Sueded Microfiber Inserts



Medium Ash Gray Leather-Appointed Front Seats with Perforated Inserts

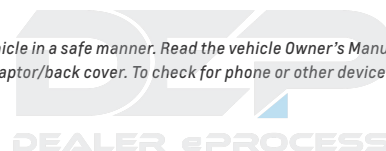


Jet Black Leather-Appointed Front Seats with Perforated Inserts



Ceramic White Leather-Appointed Front Seats with Perforated Inserts and Jet Black Accents⁴

¹ Safety or driver assistance features are no substitute for the driver's responsibility to operate the vehicle in a safe manner. Read the vehicle Owner's Manual for important feature limitations and information. ² The system wirelessly charges one compatible mobile device. Some phones have built-in wireless charging technology and others require a special adaptor/back cover. To check for phone or other device compatibility, see my.chevrolet.com/learn or consult your carrier. ³ Requires available Adrenaline Red Interior Package. ⁴ Requires available Ceramic White Interior Package.



SS

STANDARD WHEELS PAIRED WITH SUMMER-ONLY TIRES¹



20" x 8.5" Front and 20" x 9.5" Rear
5-Spoke Bright Silver-Painted
Aluminum Wheels

AVAILABLE WHEELS PAIRED WITH SUMMER-ONLY TIRES¹



20" x 8.5" Front and 20" x 9.5" Rear
5-Spoke Carbon Flash-Painted
Aluminum Wheels



20" x 8.5" Front and 20" x 9.5" Rear
5-Split-Spoke Bright
Silver-Painted Aluminum Wheels²



20" x 8.5" Front and 20" x 9.5" Rear
5-Split-Spoke Premium Gray-Painted
Machined-Face Aluminum Wheels²



20" x 8.5" Front and 20" x 9.5" Rear
5-Split-Spoke Black
Forged-Aluminum Wheels



20" x 8.5" Front and 20" x 9.5" Rear
5-Split-Spoke Polished
Forged-Aluminum Wheels with
Black Star Center Cap



20" x 8.5" Front and 20" x 9.5" Rear
5-Split-Spoke Polished
Forged-Aluminum Wheels with
Camaro Logo Center Cap
Available with Design Package 1,
Design Package 2 or Design Package 3



20" x 8.5" Front and 20" x 9.5" Rear
Black-Painted Aluminum Wheels
with Red Accents
Available with Redline Edition²



20" x 8.5" Front and 20" x 9.5" Rear
Blade-Design Aluminum Wheels
Available on 2SS with Shock and
Steel Special Edition²



20" x 10" Front and 20" x 11" Rear
5-Split-Spoke Satin Graphite
Forged-Aluminum Wheels
Available with SS 1LE
Track Performance Package

¹ Do not use summer-only tires in winter conditions, as it would adversely affect vehicle safety, performance and durability. Use only GM-approved tire and wheel combinations. Unapproved combinations may change the vehicle's performance characteristics. For important tire and wheel information, go to chevrolet.com/support/vehicle/driving-safety/tires-wheels/tire-types or see your dealer. ² Restrictions apply. See dealer for more information. Not available with copper-free brake system.

ZL1



Summit White



Sharkskin Metallic



Shadow Gray Metallic



Red Hot



Radiant Red Tintcoat¹



Vivid Orange Metallic¹



Rapid Blue¹



Riverside Blue Metallic



Black

¹Extra-cost color.



ZL1



Available on Coupe and Convertible. Select standard features include:

MECHANICAL

Engine – 6.2L LT4 supercharged V8 with Variable Valve Timing and Direct Injection

Cooling – extra-capacity cooling system and transmission oil cooler
– auxiliary engine coolant cooler and rear differential oil cooler

Differential – electronic Limited-Slip (eLSD) (Coupe)

Driver Mode Selector – four modes: Snow/Ice, Tour, Sport and Track

Exhaust system – dual-mode performance with quad outlets

Launch control – custom

Suspension – 4-wheel independent, Performance (FE4); Magnetic Ride Control

Transmission – 6-speed manual with Hill Hold feature and Active Rev Matching

EXTERIOR

Headlamps – LED with LED signature and automatic on/off

Hood – ZL1-specific

Spoiler – rear, Sport (Coupe); rear, stanchion (Convertible)

INTERIOR

Air conditioning – automatic, dual-zone with individual climate settings

Audio – Bose premium 9-speaker (Coupe) or 7-speaker (Convertible) audio system

Driver Information Center – enhanced 8-inch diagonal reconfigurable multi-color display with compass

Entertainment – Chevrolet Infotainment 3 Plus system¹ with 8-inch diagonal HD color touch-screen

Head-Up Display – color digital display with readouts for vehicle speed, tachometer, selected gear, g force, high beam indicator, turn signals, outside air temperature, audio system, turn-by-turn directions and phone information

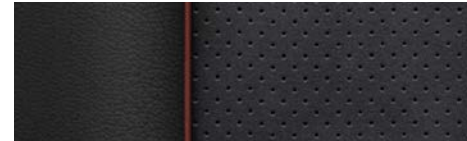
Lighting – interior spectrum with 24 different color selections

Memory settings – recalls two presets for power driver seat and outside rearview mirrors

Pedals – Sport alloy

Shifter – sueded microfiber-wrapped

Steering wheel – sueded microfiber-wrapped flat-bottom with mounted audio, cruise and phone controls; heated



RECARO® Performance Seats with Jet Black Leather Appointments with Red Accents and Perforated Sueded Microfiber Inserts

STANDARD WHEELS PAIRED WITH SUMMER-ONLY TIRES²



20" x 10" Front and 20" x 11" Rear
10-Split-Spoke Dark Graphite-Painted
Forged-Aluminum Wheels

AVAILABLE WHEELS PAIRED WITH SUMMER-ONLY TIRES²



19" x 11" Front and 19" x 12" Rear
5-Split-Spoke Low-Gloss Black-
Painted Forged-Aluminum Wheels
Available with ZL1LE Extreme
Track Performance Package

¹ Chevrolet Infotainment System functionality varies by model. Full functionality requires compatible Bluetooth and smartphone, and USB connectivity for some devices. ² Do not use summer-only tires in winter conditions, as it would adversely affect vehicle safety, performance and durability. Use only GM-approved tire and wheel combinations. Unapproved combinations may change the vehicle's performance characteristics. For important tire and wheel information, go to chevrolet.com/support/vehicle/driving-safety/tires-wheels/tire-types or see your dealer.



PERFORMANCE

	LS/LT	LT	LT1/SS/SS 1LE	ZL1/ZL1 1LE
Engine	2.0L turbocharged DOHC 4-cylinder	3.6L DOHC V6	6.2L LT1 V8	6.2L LT4 supercharged V8
Bore and Stroke	86.00 mm x 86.00 mm	95.00 mm x 85.60 mm	103.25 mm x 92.00 mm	103.25 mm x 92.00 mm
Compression Ratio	9.5:1	11.5:1	11.5:1	10.0:1
Horsepower	275 hp @ 5600 rpm	335 hp @ 6800 rpm	455 hp @ 6000 rpm	650 hp @ 6400 rpm
Torque	295 lb.-ft. @ 3000–4500 rpm	284 lb.-ft. @ 5300 rpm	455 lb.-ft. @ 4400 rpm	650 lb.-ft. @ 3600 rpm
Redline	7000 rpm	7200 rpm	6500 rpm	6600 rpm
Axle Ratio	3.27:1 (manual) 3.27:1 (automatic)	3.27:1 (manual) 2.77:1 (automatic)	3.73:1 (manual and SS 1LE) 2.77:1 (automatic LT1 and SS) 2.85:1 (automatic SS 1LE)	3.73:1 (manual and ZL1 1LE) 2.77:1 (automatic Convertible) 2.85:1 (automatic Coupe)
0 to 60 (Based on initial vehicle movement)	5.4 seconds (manual Coupe) 5.5 seconds (automatic Coupe)	5.2 seconds (manual Coupe) 5.4 seconds (automatic Coupe)	4.3 seconds (manual SS Coupe) 4.0 seconds (automatic SS Coupe) 4.3 seconds (manual LT1 Coupe) 4.2 seconds (automatic LT1 Coupe)	3.7 seconds (manual Coupe and ZL1 1LE) 3.5 seconds (automatic Coupe and ZL1 1LE)
Quarter Mile	14.0 seconds @ 100 mph (manual Coupe) 14.0 seconds @ 99 mph (automatic Coupe)	13.7 seconds @ 102 mph (manual Coupe) 13.7 seconds @ 105 mph (automatic Coupe)	12.5 seconds @ 115 mph (manual SS Coupe and SS 1LE) 12.3 seconds @ 116 mph (automatic SS Coupe) 12.5 seconds @ 116 mph (manual LT1 Coupe) 12.3 seconds @ 118 mph (automatic LT1 Coupe)	11.8 seconds @ 125 mph (manual Coupe and ZL1 1LE) 11.4 seconds @ 127 mph (automatic Coupe)
Skid Pad (Maximum lateral acceleration)	0.85 g	0.89 g	0.97 g (SS Coupe) 1.02 g (SS 1LE)	1.02 g (Coupe) 1.00 g (Convertible) 1.10 g (ZL1 1LE)
Top Track Speed	149 mph	149 mph	180 mph (SS Coupe) 175 mph (SS 1LE) 149 mph (LT1)	191 mph (ZL1 1LE) 198 mph (automatic Coupe)
Braking System	4-wheel antilock, 4-wheel disc Brembo® 4-piston front, performance (available on LT)	4-wheel antilock, 4-wheel disc Brembo 4-piston front, performance (available)	4-wheel antilock, 4-wheel disc, Brembo 4-piston front, performance (LT1) 4-wheel antilock, 4-wheel disc, Brembo 4-piston front and rear, performance (SS) 4-wheel antilock, 4-wheel disc with 2-piece rotors, Brembo 6-piston monobloc front and 4-piston rear calipers, performance (SS 1LE) ¹ Copper-free brake system, 4-wheel antilock, 4-wheel disc with 2-piece rotors, Brembo 6-piston monobloc front and 4-piston rear calipers, performance (available) ²	4-wheel antilock, 4-wheel disc with 2-piece rotors, Brembo 6-piston monobloc front and 4-piston rear calipers, performance Copper-free brake system, 4-wheel antilock, 4-wheel disc with 2-piece rotors, Brembo 6-piston monobloc front and 4-piston rear calipers, performance (available) ²
Braking Distance (60 to 0 mph)	129 ft.	124 ft. (Coupe with available RS Package)	117 ft. (SS Coupe) 107 ft. (SS 1LE)	107 ft. (ZL1 Coupe) 101 ft. (ZL1 1LE) 110 ft. (ZL1 Convertible)
Tires	245/50R18 all-season 245/40R20 all-season, run-flat (available on LT)	245/50R18 all-season 245/40R20 all-season, run-flat (available)	245/40R20 all-season, run-flat (LT1) 245/40ZR20 front and 275/35ZR20 rear, summer-only ³ , run-flat (SS) Goodyear Eagle® F1 SuperCar® 285/30R20 front and 305/30R20 rear, summer-only ³ (SS 1LE)	Goodyear Eagle F1 SuperCar 285/30R20 front and 305/30R20 rear, summer-only ³ (ZL1) Goodyear Eagle F1 SuperCar 3R 305/30R19 front and 325/30R19 rear, summer-only ^{3,4} (ZL1 1LE)

¹ Requires available copper-free brake system for California and Washington state. ² Required for California and Washington state. ³ Do not use summer-only tires in winter conditions, as it would adversely affect vehicle safety, performance and durability. Use only GM-approved tire and wheel combinations. Unapproved combinations may change the vehicle's performance characteristics. For important tire and wheel information, go to chevrolet.com/support/vehicle/driving-safety/tires-wheels/tire-types or see your dealer. ⁴ Driving on wet roads, in heavy rain, or through standing water with competition-oriented tires may cause hydroplaning and loss of control. Use extreme caution and drive slowly on wet roads.

● STANDARD ○ AVAILABLE – NOT AVAILABLE

	1LS	1LT	2LT	3LT	LT1	1SS	2SS	ZL1
SAFETY AND DRIVER ASSISTANCE								
Airbags ¹ – frontal and knee airbags for driver and front passenger; seat-mounted side-impact airbags for driver and front passenger (head/thorax for Convertible); head-curtain airbags for all outboard seating positions (Coupe); includes Passenger Sensing System for passenger-side frontal and knee airbags (Coupe/Convertible)	●	●	●	●	●	●	●	●
Forward Collision Alert ² (removed when available Performance Data Recorder is ordered on 2SS and ZL1)	–	–	–	● ³	–	–	● ³	● ³
Lane Change Alert with Side Blind Zone Alert ²	–	–	–	●	–	–	●	●
LATCH system (Lower Anchors and Tethers for CHildren) – for child restraint systems	●	●	●	●	●	●	●	●
Rear Cross Traffic Alert ²	–	–	–	●	–	–	●	●
Rear Park Assist ² (feature will not function on certain models; see dealer for details or the window label for features on a specific vehicle)	–	–	–	○	–	–	○	○
Rear Vision Camera ²	●	●	●	–	●	–	–	–
HD Rear Vision Camera ² (requires available Chevrolet Infotainment 3 Plus system ⁴ on 1LT, 2LT and LT1)	–	○	○	●	○	●	●	●
Teen Driver technology ²	●	●	●	●	●	●	●	●
Theft-deterrent system – unauthorized entry	●	●	●	●	●	●	●	●
Tire Pressure Monitoring System – with Tire Fill Alert	●	●	●	●	●	●	●	●
Up to 3 months of OnStar [®] Safety & Security coverage ⁵	●	●	●	●	●	●	●	●

	1LS	1LT	2LT	3LT	LT1	1SS	2SS	ZL1
MECHANICAL								
Brakes – 4-wheel antilock disc; electronic parking brake	●	●	●	●	●	●	●	●
Brakes – Brembo [®] 4-piston front calipers, performance (requires available Heavy-Duty Cooling and Brake Package on 1LT, 2LT and 3LT Coupe; requires available Red- or Orange-painted brake calipers on 1LT, 2LT and 3LT; requires available Shock and Steel Special Edition on 2LT and 3LT)	–	○	○	○	●	–	–	–
– Brembo 4-piston front and rear calipers, performance	–	–	–	–	–	●	●	–
Brakes – Brembo 6-piston monobloc front calipers and 4-piston rear calipers, 2-piece brake rotors, performance; includes Red-painted brake calipers on SS; includes Silver-painted brake calipers on ZL1 (requires available SS 1LE Track Performance Package on 1SS and 2SS; requires available copper-free brake system for California and Washington state)	–	–	–	–	–	○ ³	○ ³	●
– copper-free brake system, Brembo 6-piston monobloc front calipers and 4-piston rear calipers, 2-piece brake rotors, performance; includes Red-painted brake calipers on SS; includes Silver-painted brake calipers on ZL1; includes Red-painted brake calipers with available ZL1 1LE Extreme Track Performance Package on ZL1 (required for California and Washington state; available in all other markets)	–	–	–	–	–	○	○	○
Brakes – Yellow-painted brake calipers; includes Brembo 4-piston front calipers on 2LT and 3LT (requires available Shock and Steel Special Edition)	–	–	○	○	–	–	○	–
– Orange-painted brake calipers; includes Brembo 4-piston front calipers on 1LT, 2LT and 3LT (not available with SS 1LE Track Performance Package or with copper-free brake system)	–	○	○	○	○	○	○	–
– Red-painted brake calipers; includes Brembo 4-piston front calipers on 1LT, 2LT and 3LT	–	○	○	○	○	○	○	–
Cooler – auxiliary engine coolant	–	–	–	–	–	● ³	● ³	●
– differential	–	–	–	–	–	● ³	● ³	●
– transmission oil (requires available automatic transmission on 1SS and 2SS Convertible)	–	–	–	–	–	● ³	● ³	●
Cooling – external engine oil cooler (requires available Heavy-Duty Cooling and Brake Package on 1LT, 2LT and 3LT)	–	○ ³	○ ³	○ ³	●	●	●	●
Cooling system – extra capacity (requires available Heavy-Duty Cooling and Brake Package on 1LT, 2LT and 3LT)	–	○ ³	○ ³	○ ³	–	●	●	●

¹ A NOTE ON CHILD SAFETY: Always use seat belts and the correct child restraint for your child's age and size, even with airbags. Even in vehicles equipped with the Passenger Sensing System, children are safer when properly secured in a rear seat in the appropriate infant, child or booster seat. Never place a rear-facing infant restraint in the front seat of any vehicle equipped with an active frontal airbag. See your vehicle Owner's Manual and the child safety seat instructions for more safety information.

² Safety or driver assistance features are no substitute for the driver's responsibility to operate the vehicle in a safe manner. Read the vehicle Owner's Manual for important feature limitations and information. ³ Coupe only. ⁴ Chevrolet Infotainment System functionality varies by model. Full functionality requires compatible Bluetooth and smartphone, and USB connectivity for some devices. ⁵ When you select a monthly plan within 15 days of activating your 1-month trial, you'll receive the next 2 months of the plan you select at no additional charge when you associate an approved payment method on file to your account and authorize recurring payments for your service plan. The amount and frequency of each recurring payment is based upon the service(s) and payment interval(s) you select from the options provided. After the trial expires, OnStar will automatically bill your payment method monthly at then-current standard monthly rates. Plans containing 4G LTE data will be billed every 30 days by AT&T. You may cancel at any time by pushing your blue OnStar button or calling 1-888-466-7827. May not be combined with other offers or retroactively applied. Offer subject to change.

● STANDARD ○ AVAILABLE – NOT AVAILABLE

	1LS	1LT	2LT	3LT	LT1	1SS	2SS	ZL1
MECHANICAL (CONTINUED)								
Differential – limited-slip	● ¹	● ¹	● ¹	● ¹	●	●	●	● ²
– electronic Limited-Slip (eLSD) (requires available SS 1LE Track Performance Package on 1SS and 2SS)	–	–	–	–	–	○ ³	○ ³	● ³
– differential oil cooler	–	–	–	–	–	○ ³	○ ³	●
Driver Mode Selector – three modes: Snow/Ice, Tour and Sport	●	●	●	●	●	–	–	–
– four modes: Snow/Ice, Tour, Sport and Track	–	–	–	–	–	●	●	●
Engine – 2.0L turbocharged DOHC 4-cylinder; 275 hp and 295 lb.-ft. of torque	●	●	●	●	–	–	–	–
– 3.6L V6; 335 hp and 284 lb.-ft. of torque	–	○	○	○	–	–	–	–
– 6.2L LT1V8; 455 hp and 455 lb.-ft. of torque	–	–	–	–	–	●	●	–
– 6.2L LT4 supercharged V8; 650 hp and 650 lb.-ft. of torque	–	–	–	–	–	–	–	●
– engine air filter life monitor	●	●	●	●	–	–	–	–
Exhaust system – dual-outlet stainless steel with bright tips	●	●	●	●	●	●	●	●
– dual-mode performance with quad outlets (requires available 3.6L V6 engine on 1LT, 2LT and 3LT)	–	○	○	○	○	○	○	●
Launch control – custom (requires available automatic transmission on 1SS and 2SS)	–	–	–	–	–	○	○	●
StabiliTrak® – Electronic Stability Control System with Traction Control	●	●	●	●	●	●	●	●
Steering – power, electric, rack-and-pinion, variable-ratio	●	●	●	●	●	●	●	●
Suspension – 4-wheel independent, Sport (FE2)	●	●	●	●	–	–	–	–
– Performance (FE3)	–	–	–	–	●	●	●	–
– Performance (FE4) (requires available SS 1LE Track Performance Package on 1SS and 2SS)	–	–	–	–	–	○ ³	○ ³	●
– Magnetic Ride Control (removed on ZL1 Coupe when available ZL11LE Extreme Track Performance Package is ordered)	–	–	–	–	–	○	○	●
– Performance with Multimatic DSSV™ (Dynamic Suspensions Spool Valve) dampers (requires available ZL1 1LE Extreme Track Performance Package)	–	–	–	–	–	–	–	○ ³
Transmission – 6-speed manual with Hill Hold feature; includes Active Rev Matching on LT1, 1SS, 2SS and ZL1	●	●	●	●	●	●	●	●
– 8-speed paddle-shift automatic with Hill Start Assist; includes remote vehicle starter system (requires 2.0L turbocharged engine on 1LT, 2LT and 3LT)	○	○	○	○	–	–	–	–
– 10-speed paddle-shift automatic with Hill Start Assist; includes remote vehicle starter system (requires available 3.6L V6 engine on 1LT, 2LT and 3LT)	–	○	○	○	○	○	○	○

	1LS	1LT	2LT	3LT	LT1	1SS	2SS	ZL1
EXTERIOR								
Antenna – fin-type, Black	●	●	●	●	●	–	–	–
– fin-type, body-color (requires available RS Package on 1LT, 2LT and LT1)	–	○	○	●	○	–	–	●
Chevrolet bowtie emblems – Gold front and rear	●	●	●	●	–	–	–	–
– Black front and rear	○	○	○	○	●	●	●	●
Convertible top – power-folding, remote control (down only), includes glass rear window with integral defogger	–	●	●	●	●	●	●	●
Daytime running lamps – LED	●	●	●	●	●	●	●	●
Emblem – Camaro insignia front fender badge	●	●	●	●	–	●	●	–
– LT1 front fender badge	–	–	–	–	●	–	–	–
– Black Camaro front fender badge	○	○	○	○	–	○	○	–
– Black Camaro front fender badge with Red outline (requires available Redline Edition)	–	○	○	○	○	○	○	–
Fuel filler – capless fueling	●	●	●	●	●	●	●	●
Headlamps – LED with LED signature and automatic on/off	●	●	●	●	●	●	●	●
Hood insert – visible carbon-fiber weave	–	–	–	–	–	–	–	○
Hood wrap – Satin Black (requires available SS 1LE Track Performance Package on 1SS and 2SS; requires available ZL1 1LE Extreme Track Performance Package on ZL1)	–	–	–	–	–	○ ³	○ ³	○ ³
Mirrors – power-adjustable, manual-folding with body-color caps	●	●	●	–	●	●	–	–
– heated, power-adjustable, manual-folding with body-color caps and driver-side auto-dimming feature	–	–	–	●	–	–	●	●
Spoiler – rear, lip, decklid-mounted (requires available Satin Black Appearance Package on 1LS; requires available Satin Black Appearance Package or RS Package on 1LT, 2LT, 3LT and LT1; requires available Body-Color Blade Spoiler or Body-Color Wing Spoiler from Chevrolet Accessories on 1SS and 2SS)	○	○	○	○	○	○ ³	○ ³	–
– rear, blade, Satin Black (requires available SS 1LE Track Performance Package)	–	–	–	–	–	○ ³	○ ³	–
– rear, stanchion	–	● ²	○ ⁴	○ ⁴	● ²	●	●	● ²
– rear, Sport	–	–	–	–	–	–	–	● ³
– rear, wing, visible carbon-fiber weave (requires available ZL11LE Extreme Track Performance Package)	–	–	–	–	–	–	–	○ ³
Taillamps – dark-tinted (requires available RS Package on LT1)	○	○	○	○	○	●	●	●

¹ Requires 6-speed manual transmission. ² Convertible only. ³ Coupe only. ⁴ Requires available Shock and Steel Special Edition on Coupe. Included on Convertible.

● STANDARD ○ AVAILABLE – NOT AVAILABLE

	1LS	1LT	2LT	3LT	LT1	1SS	2SS	ZL1
EXTERIOR (CONTINUED)								
Tires – 245/50R18 all-season; includes tire inflator kit	●	●	●	●	–	–	–	–
– 245/40R20 all-season, run-flat	–	○	○	○	●	–	–	–
– 245/40ZR20 front and 275/35ZR20 rear, summer-only ¹ ; run-flat	–	–	–	–	–	●	●	–
– 285/30ZR20 front and 305/30ZR20 rear, summer-only ¹ ; includes tire inflator kit (requires available SS 1LE Track Performance Package on 1SS and 2SS)	–	–	–	–	–	○ ²	○ ²	●
– 305/30ZR19 front and 325/30ZR19 rear, summer-only ¹ ; Goodyear Eagle® F1 SuperCar® 3R (requires available ZL1 1LE Extreme Track Performance Package)	–	–	–	–	–	–	–	○ ²
Wheels – 5-split-spoke Silver-painted aluminum 18" x 8.5" front and rear	●	–	–	–	–	–	–	–
– 5-spoke Silver-painted aluminum 18" x 8.5" front and rear	–	●	●	●	–	–	–	–
– 5-spoke Silver-painted aluminum 20" x 8.5" front and rear	–	–	–	–	●	–	–	–
– 5-spoke Carbon Flash-painted aluminum 20" x 8.5" front and rear	–	○	○	○	○	–	–	–
– 5-split-spoke Bright Silver-painted aluminum 20" x 8.5" front and rear (requires available RS Package on 1LT, 2LT and 3LT)	–	○	○	○	○	–	–	–
– 5-split-spoke premium Gray-painted machined-face aluminum 20" x 8.5" front and rear (requires available RS Package on 1LT, 2LT and 3LT)	–	○	○	○	○	–	–	–
– 5-split-spoke Black forged-aluminum 20" x 8.5" front and rear (requires available RS Package on 1LT, 2LT and 3LT)	–	○	○	○	○	–	–	–
– 5-split-spoke polished forged-aluminum with Black star center cap 20" x 8.5" front and rear (requires available RS Package on 1LT, 2LT and 3LT)	–	○	○	○	○	–	–	–
– 5-split-spoke polished forged-aluminum with Camaro logo center cap 20" x 8.5" front and rear (requires available RS Package and Design Package 1, Design Package 2 or Design Package 3 on 1LT, 2LT and 3LT; requires available Design Package 1, Design Package 2 or Design Package 3 on LT1)	–	○	○	○	○	–	–	–
– Black-painted aluminum with Red accents 20" x 8.5" front and rear (requires available Redline Edition)	–	○	○	○	○	–	–	–
– blade-design aluminum 20" x 8.5" front and rear (requires available Shock and Steel Special Edition)	–	–	○	○	–	–	–	–

	1LS	1LT	2LT	3LT	LT1	1SS	2SS	ZL1
EXTERIOR (CONTINUED)								
Wheels – 5-spoke Bright Silver-painted aluminum 20" x 8.5" front and 20" x 9.5" rear	–	–	–	–	–	●	●	–
– 5-spoke Carbon Flash-painted aluminum 20" x 8.5" front and 20" x 9.5" rear	–	–	–	–	–	○	○	–
– 5-split-spoke Bright Silver-painted aluminum 20" x 8.5" front and 20" x 9.5" rear (not available with copper-free brake system)	–	–	–	–	–	○	○	–
– 5-split-spoke premium Gray-painted machined-face aluminum 20" x 8.5" front and 20" x 9.5" rear (not available with copper-free brake system)	–	–	–	–	–	○	○	–
– 5-split-spoke Black forged-aluminum 20" x 8.5" front and 20" x 9.5" rear	–	–	–	–	–	○	○	–
– 5-split-spoke polished forged-aluminum with Black star center cap 20" x 8.5" front and 20" x 9.5" rear	–	–	–	–	–	○	○	–
– 5-split-spoke polished forged-aluminum with Camaro logo center cap 20" x 8.5" front and 20" x 9.5" rear (requires available Design Package 1, Design Package 2 or Design Package 3)	–	–	–	–	–	○	○	–
– Black-painted aluminum with Red accents 20" x 8.5" front and 20" x 9.5" rear (requires available Redline Edition)	–	–	–	–	–	○ ³	○ ³	–
– blade-design aluminum 20" x 8.5" front and 20" x 9.5" rear (requires available Shock and Steel Special Edition)	–	–	–	–	–	–	○ ³	–
– 5-split-spoke Satin Graphite forged-aluminum 20" x 10" front and 20" x 11" rear (requires available SS 1LE Track Performance Package; requires available copper-free brake system for California and Washington state)	–	–	–	–	–	○ ²	○ ²	–
Wheels – 10-split-spoke Dark Graphite-painted forged-aluminum 20" x 10" front and 20" x 11" rear	–	–	–	–	–	–	–	●
– 5-split-spoke low-gloss Black-painted forged-aluminum 19" x 11" front and 19" x 12" rear (requires available ZL1 1LE Extreme Track Performance Package; requires available copper-free brake system for California and Washington state)	–	–	–	–	–	–	–	○ ²
Wipers – front variable-speed, intermittent	●	●	●	●	●	●	●	●

¹ Do not use summer-only tires in winter conditions, as it would adversely affect vehicle safety, performance and durability. Use only GM-approved tire and wheel combinations. Unapproved combinations may change the vehicle's performance characteristics. For important tire and wheel information, go to chevrolet.com/support/vehicle/driving-safety/tires-wheels/tire-types or see your dealer. ² Coupe only. ³ Restrictions apply. See dealer for more information. Not available with SS 1LE Track Performance Package or with copper-free brake system.



● STANDARD ○ AVAILABLE – NOT AVAILABLE

	1LS	1LT	2LT	3LT	LT1	1SS	2SS	ZL1
INTERIOR								
Air conditioning – automatic, single-zone	●	●	–	–	●	●	–	–
– automatic, dual-zone with individual climate settings for driver and front passenger	–	–	●	●	–	–	●	●
Cruise control – electronic with Set and Resume Speed	●	●	●	●	●	●	●	●
Door locks – power programmable with lockout protection	●	●	●	●	●	●	●	●
Driver Information Center – color display with compass	●	●	●	–	●	–	–	–
– enhanced 8-inch diagonal multi-color reconfigurable display with compass	–	–	–	●	–	●	●	●
Floor mats – carpeted, front	●	●	●	●	●	●	●	●
Head-Up Display – color digital display with readouts for vehicle speed, tachometer, selected gear, g force, high beam indicator, turn signals, outside air temperature, audio system, turn-by-turn directions and phone information (requires available SS 1LE Track Performance Package on 1SS)	–	–	–	●	–	○	●	●
Interior trim – aluminum accents on door trim and shifter cap	–	–	–	●	–	–	●	●
– carbon-fiber instrument panel molding (requires available Shock and Steel Special Edition on 2LT, 3LT and 2SS)	–	–	○	○	–	–	○	○
Keyless Open and Start – includes extended-range Remote Keyless Entry and panic feature	●	●	●	●	●	●	●	●
Knee pads – Black, sueded (requires available Design Package 2 or Design Package 3)	–	○	○	○	○	○	○	–
– Red	–	○	○	○	○	○	○	○
Lighting – front reading lamps with illuminated entry	●	●	●	●	●	●	●	●
– interior spectrum with 24 different color selections	–	–	–	●	–	–	●	●
Memory settings – recalls two presets for power driver seat and outside rearview mirrors	–	–	–	●	–	–	●	●
Mirror – rearview, manual, frameless	●	●	●	–	●	●	–	–
– Rear Camera Mirror, ¹ auto-dimming	–	–	–	●	–	–	●	●
Pedals – Sport alloy	–	○	○	○	○	○	○	●
Remote vehicle starter system (requires available automatic transmission)	○	○	○	○	○	○	○	○
Seat belts – Red	○	○	○	○	○	○	○	○
Shift knob – leather-wrapped	●	●	●	●	●	●	●	–
– sueded microfiber-wrapped (requires available sueded microfiber-wrapped flat-bottom steering wheel on 1LT, 2LT, 3LT and LT1; requires available sueded microfiber-wrapped flat-bottom steering wheel or SS 1LE Track Performance Package on 1SS and 2SS)	–	○	○	○	○	○	○	●

	1LS	1LT	2LT	3LT	LT1	1SS	2SS	ZL1
INTERIOR (CONTINUED)								
Sill plates – illuminated	–	–	–	●	–	–	●	●
Steering column – manual tilt and telescopic	●	●	●	●	●	●	●	●
Steering wheel – leather-wrapped flat-bottom	●	●	●	●	●	●	●	–
– sueded microfiber-wrapped flat-bottom (requires available automatic transmission on LT1)	–	○	○	○	○	○	○	●
– mounted audio, cruise and phone controls	●	●	●	●	●	●	●	●
– heated	–	–	–	●	–	–	●	●
Sunroof – power with sunshade	–	○ ²	○ ²	○ ²	○ ²	○ ²	○ ²	○ ²
Trunk release – power	●	●	●	●	●	●	●	●
Visors – driver and front passenger, covered vanity mirrors	●	●	●	● ³	●	● ³	● ³	● ³
– driver and front passenger, covered vanity mirrors, illuminated	–	–	–	● ²	–	● ²	● ²	● ²
Windows – power, driver and front passenger express-up/-down	●	●	●	●	●	●	●	●
SEATING								
Seats – reclining front bucket	●	●	●	●	●	●	●	–
– RECARO® performance front bucket (requires Jet Black interior color)	–	○	○	○	○	○	○	●
– cloth front bucket	●	●	–	–	●	–	–	–
– perforated leather-trimmed front bucket	–	–	●	–	–	–	●	–
– leather-trimmed front bucket with perforated sueded microfiber inserts (requires available RECARO performance front bucket seats)	–	○	○	○	○	○	○	●
Seat – driver 8-way power adjuster	●	●	●	●	●	●	●	●
– front passenger 4-way manual adjuster with power recline	●	–	–	–	–	–	–	–
– front passenger 6-way power adjuster	–	●	●	●	●	●	●	●
Heated and ventilated front seats (feature will not function on certain models without dealer retrofit; see dealer or window label for details)	–	–	○	○	–	–	○	○
Rear seat – fixed; included on ZL1 Convertible (requires available ZL1LE Extreme Track Performance Package on ZL1 Coupe)	● ³	● ³	● ³	● ³	● ³	● ³	● ³	○
– folding	● ²	● ²	● ²	● ²	● ²	● ²	● ²	● ²



¹ Safety or driver assistance features are no substitute for the driver's responsibility to operate the vehicle in a safe manner. Read the vehicle Owner's Manual for important feature limitations and information. ² Coupe only. ³ Convertible only.

● STANDARD ○ AVAILABLE – NOT AVAILABLE

	1LS	1LT	2LT	3LT	LT1	1SS	2SS	ZL1
ENTERTAINMENT								
Chevrolet Infotainment 3 system ¹ with 7-inch diagonal color touch-screen, AM/FM stereo, Bluetooth [®] audio streaming ² for two active devices, voice command pass-through to compatible phone, and wireless Apple CarPlay ^{®3} and wireless Android Auto ^{™4} compatibility	●	●	●	–	●	–	–	–
Chevrolet Infotainment 3 Plus system ¹ with 8-inch diagonal HD color touch-screen, AM/FM stereo, Bluetooth audio streaming ² for two active devices, voice command pass-through to compatible phone, wireless Apple CarPlay ³ and wireless Android Auto ⁴ compatibility, available Alexa Built-in ⁵ voice recognition and available In-Vehicle Apps ⁶ (requires available Technology Package on 1LT, 2LT and LT1)	–	○	○	●	○	●	●	●
Chevrolet Infotainment 3 Premium system ¹ with Navigation ⁷ and 8-inch diagonal HD color touch-screen, AM/FM stereo, Bluetooth audio streaming ² for two active devices, voice command pass-through to compatible phone, wireless Apple CarPlay ³ and wireless Android Auto ⁴ compatibility, available Alexa Built-in ⁵ enhanced voice recognition, additional memory for available In-Vehicle Apps ⁶ and Connected Navigation ⁸	–	–	–	○	–	–	○	○
Audio – 6-speaker system	●	●	●	–	●	●	–	–
– Bose premium 9-speaker (Coupe) or 7-speaker (Convertible) audio system (requires available Technology Package on 1LT, 2LT and LT1)	–	○	○	●	○	–	●	●
Media – two USB ports ⁹ and auxiliary input jack	●	●	●	●	●	●	●	●
Performance Data Recorder and video recorder (removes Forward Collision Alert on 2SS and ZL1 when equipped) (requires available SS 1LE Track Performance Package on 1SS and 2SS)	–	–	–	–	–	○ ¹⁰	○ ¹⁰	○ ¹⁰
SiriusXM ^{®11} 12-month trial subscription to SXM Platinum Plan	–	●	●	–	●	–	–	–
SiriusXM with 360L ^{11,12} 12-month trial subscription to SXM Platinum Plan (requires available Technology Package on 1LT, 2LT and LT1)	–	○	○	●	○	●	●	●
Available Wi-Fi [®] Hotspot ¹³ for up to seven devices, includes 1-month Unlimited Data Plan	○	○	○	○	○	○	○	○
Chevrolet Connected Access ¹⁴ with up to 10 years of standard connectivity, which currently enables features such as Vehicle Diagnostics and Dealer Maintenance Notification	●	●	●	●	●	●	●	●
Wireless charging ¹⁵	–	–	–	●	–	–	●	●

¹ Chevrolet Infotainment System functionality varies by model. Full functionality requires compatible Bluetooth and smartphone, and USB connectivity for some devices. ² Go to my.chevrolet.com/learnAbout/bluetooth to find out which phones are compatible with the vehicle. Full Bluetooth feature functionality varies by device, model and software version. ³ Vehicle user interface is a product of Apple and its terms and privacy statements apply. Requires compatible iPhone and data plan rates apply. ⁴ Vehicle user interface is a product of Google and its terms and privacy statements apply. To use Android Auto on your car display, you'll need an Android phone running Android 6 or higher, an active data plan, and the Android Auto app. ⁵ Functionality is subject to limitations and varies by vehicle, infotainment system and location. Select service plan required. Certain Alexa Skills require account linking to use. Visit onstar.com for additional details. ⁶ Third-party trademarks are the property of their respective third-party owners and used under agreement. Requires active service plan and paid AT&T vehicle data plan. Visit onstar.com for details and limitations. ⁷ Map coverage available in the United States, Puerto Rico and Canada. ⁸ Connected Navigation and Real-time Points of Interest (POI) only available on properly equipped vehicles. Requires paid plan or trial. Map coverage available in the United States, Puerto Rico and Canada. Visit onstar.com for details and limitations. ⁹ Not compatible with all devices. ¹⁰ Coupe only. ¹¹ If you decide to continue service after your trial, your selected subscription plan will automatically renew thereafter. You will be charged at then-current rates. Fees and taxes apply. To cancel you must call SiriusXM at 1-866-635-2349. See SiriusXM Customer Agreement for complete terms at siriusxm.com. All fees and programming subject to change. ¹² Certain features require a SiriusXM subscription and the Chevrolet Connected Access plan. See siriusxm.com and onstar.com for details and limitations. ¹³ Service varies with conditions and location. Requires active service and paid AT&T data plan. Visit onstar.com for details and limitations. Availability subject to change. ¹⁴ Standard connectivity available only to original purchaser for up to 10 years. Connected Access services are subject to change. Does not include emergency or security services. Diagnostic capabilities vary by model and service plan. Message and data rates may apply. Requires contact method on file and enrollment to receive alerts. Not all issues will deliver alerts. Visit onstar.com for details and limitations. ¹⁵ The system wirelessly charges one compatible mobile device. Some phones have built-in wireless charging technology and others require a special adaptor/back cover. To check for phone or other device compatibility, see my.chevrolet.com/learn or consult your carrier.

● STANDARD ○ AVAILABLE – NOT AVAILABLE



Center Stripe in White Pearl (shown on 2SS).



Rally Stripes in White Pearl (shown on 2SS).



Center Stripe in Black Metallic (shown on ZL1).

	1LS	1LT	2LT	3LT	LT1	1SS	2SS	ZL1
GRAPHICS								
1LE Hash Mark Decal (requires available SS 1LE Track Performance Package)	-	-	-	-	-	○ ¹	○ ¹	-
Black Metallic Hash Mark Stripes (requires available Design Package 1 or Design Package 2)	-	○	○	○	○	○	○	-
Satin Black Hood Stripe with Silver Ice Metallic Hash Mark Stripes (requires available Design Package 3)	-	○	○	○	○	○	○	-
Center Stripe – Black (not available with Black exterior color)	○	○	○	○	-	-	-	-
– Black Metallic	-	-	-	-	○	○	○	○ ²
– Silver (not available with Sharkskin Metallic exterior color)	○	○	○	○	○	○	○	-
– White Pearl (not available with Summit White exterior color)	○	○	○	○	○	○	○	-
Rally Stripes – Black (not available with Black exterior color)	○	○	○	○	-	-	-	-
– Black Metallic	-	-	-	-	○	○	○	-
– Silver (not available with Sharkskin Metallic exterior color)	○	○	○	○	○	○	○	-
– White Pearl (not available with Summit White exterior color)	○	○	○	○	○	○	○	-

¹ Coupe only. ² Restrictions apply. See dealer for details. Roof, decklid and spoiler on Coupe. Decklid, tonneau cover and spoiler on Convertible.



RS Package.



Shock and Steel Special Edition.

● STANDARD ○ AVAILABLE – NOT AVAILABLE

	1LS	1LT	2LT	3LT	LT1	1SS	2SS	ZL1
PACKAGES AND SPECIAL EDITIONS								
Satin Black Appearance Package	○	○	○	○	○	○	○	–
Satin Black outside rearview mirrors and rear spoiler								
Heavy-Duty Cooling and Brake Package	–	○ ¹	○ ¹	○ ¹	–	–	–	–
External engine oil cooler and Brembo® 4-piston performance front brake calipers; includes extra-capacity cooling system with available automatic transmission (requires available RS Package or 20" 5-spoke Carbon Flash-painted aluminum wheels)								
RS Package	–	○	○	○	○	–	–	–
Dark-tinted taillamps, RS-specific grilles and Black Chevrolet bowtie emblems; includes 20" 5-spoke premium Gray-painted machined-face aluminum wheels on 1LT, 2LT and 3LT Coupe and Convertible; includes rear decklid-mounted lip spoiler on Coupe								
Redline Edition	–	○	○	○	○	○ ²	○ ²	–
20" Black-painted aluminum wheels with Red accents, Black Camaro fender badge with Red outline, Redline Edition graphics, Red seat belts and Red knee pads; includes Red Hot lower grille inserts on 1LT, 2LT, 3LT and LT1 (requires Jet Black interior color; requires available RS Package on 1LT, 2LT, 3LT and LT1; available with Summit White, Sharkskin Metallic or Black exterior colors; not available with SS 1LE Track Performance Package or with copper-free brake system)								
Technology Package	–	○	○	–	○	–	–	–
Chevrolet Infotainment 3 Plus system ³ with 8-inch diagonal HD color touch-screen, available Alexa Built-in ⁴ , voice recognition, available In-Vehicle Apps ⁵ ; SiriusXM ⁶ with 360L ⁶ 12-month trial subscription to SXM Platinum Plan, and Bose premium 9-speaker (Coupe) or 7-speaker (Convertible) audio system								
Adrenaline Red Interior Package	–	–	○	○	–	–	○	–
Jet Black interior with Adrenaline Red front seat inserts, door inserts and stitching on front seats, doors, steering wheel, shifter and center console (not available with Vivid Orange Metallic, Rapid Blue or Riverside Blue Metallic exterior colors)								
Ceramic White Interior Package	–	–	○	○	–	–	○	–
Jet Black interior with Ceramic White front seat inserts, door inserts and stitching on front seats, doors, steering wheel, shifter and center console								
Shock and Steel Special Edition	–	–	○	○	–	–	○ ²	–
20" blade-design aluminum wheels, Carbon Flash-painted outside mirrors, center stripe (Silver when Rapid Blue ⁷ exterior color is ordered; Shock when Summit White, Sharkskin Metallic or Black exterior color is ordered), fuel-filler door in Black with visible carbon-fiber insert, Yellow-painted Brembo 4-piston performance front brake calipers, Black sueded knee pads and carbon-fiber instrument panel molding; includes rear stanchion spoiler on Coupe models; includes RS Package on LT (requires Jet Black interior color and Summit White, Sharkskin Metallic, Rapid Blue ⁷ or Black exterior color; not available with SS 1LE Track Performance Package or with copper-free brake system)								

¹ Coupe only. ² Not available in California or Washington state. ³ Chevrolet Infotainment System functionality varies by model. Full functionality requires compatible Bluetooth and smartphone, and USB connectivity for some devices. ⁴ Functionality is subject to limitations and varies by vehicle, infotainment system and location. Select service plan required. Certain Alexa Skills require account linking to use. Visit onstar.com for additional details. ⁵ Third-party trademarks are the property of their respective third-party owners and used under agreement. Requires active service plan and paid AT&T vehicle data plan. Visit onstar.com for details and limitations. ⁶ If you decide to continue service after your trial, your selected subscription plan will automatically renew thereafter. You will be charged at then-current rates. Fees and taxes apply. To cancel you must call SiriusXM at 1-866-635-2349. See SiriusXM Customer Agreement for complete terms at siriusxm.com. All fees and programming subject to change. Certain features require a SiriusXM subscription and the Chevrolet Connected Access plan. See siriusxm.com and onstar.com for details and limitations. ⁷ Extra-cost color.

● STANDARD ○ AVAILABLE – NOT AVAILABLE



Design Package 1.



Design Package 2.



Design Package 3.

1LS 1LT 2LT 3LT LT1 1SS 2SS ZL1

PACKAGES AND SPECIAL EDITIONS (CONTINUED)

Design Package 1

Black Metallic Hash Mark Stripes, 20" 5-split-spoke polished forged-aluminum wheels with Camaro logo center cap; includes Camaro fender badge emblem on 1LT, 2LT, 3LT, 1SS and 2SS (requires available RS Package on 1LT, 2LT, 3LT and LT1; available with Radiant Red Tintcoat¹, Vivid Orange Metallic¹ or Rapid Blue¹ exterior colors)

– ○ ○ ○ ○ ○ ○ –

Design Package 2

Design Package 1 features listed above, Black sueded knee pads, Black fuel-filler door with visible carbon-fiber insert, and Carbon Flash Metallic Second Generation Ground Effects and Center Stripe (requires selection of Black or Silver Center Stripe on 1LT, 2LT and 3LT; requires selection of Black Metallic or Silver Center Stripe on LT1, 1SS and 2SS; available with Radiant Red Tintcoat¹, Vivid Orange Metallic¹ or Rapid Blue¹ exterior colors)

– ○ ○ ○ ○ ○ ○ –

Design Package 3

20" 5-split-spoke polished forged-aluminum wheels with Camaro logo center cap, Black sueded knee pads, Satin Black Hood Stripe with Silver Ice Metallic Hash Mark Stripes, Black fuel-filler door with visible carbon-fiber insert and Carbon Flash Metallic Second Generation Ground Effects; includes Camaro fender badge emblem on 1LT, 2LT, 3LT, 1SS and 2SS (requires available RS Package on 1LT, 2LT, 3LT and LT1; available with Radiant Red Tintcoat¹, Vivid Orange Metallic¹ or Rapid Blue¹ exterior colors)

– ○ ○ ○ ○ ○ ○ –

¹Extra-cost color.

● STANDARD ○ AVAILABLE – NOT AVAILABLE



SS 1LE Track Performance Package.



ZL1 1LE Extreme Track Performance Package.

1LS 1LT 2LT 3LT LT1 1SS 2SS ZL1

PACKAGES AND SPECIAL EDITIONS (CONTINUED)

SS 1LE Track Performance Package

FE4 Performance suspension with unique bushings, springs, and stabilizer bars and Magnetic Ride Control, Red-painted Brembo® 6-piston front monobloc brake calipers and 4-piston rear calipers, 2-piece brake rotors, electronic Limited-Slip Differential (eLSD), dual-mode performance exhaust system, 20" 5-split-spoke Satin Graphite forged-aluminum wheels, Goodyear Eagle® F1 SuperCar® 285/30R20 front and 305/30R20 rear summer-only tires;² Satin Black hood wrap, Black front splitter, Satin Black rear blade spoiler, RECARO® performance front bucket seats, and sueded microfiber-wrapped flat-bottom steering wheel and shift knob; includes Head-Up Display on 1SS (requires Jet Black interior color; requires available copper-free brake system for California and Washington state)

- - - - - ○¹ ○¹ -

ZL1 1LE Extreme Track Performance Package

Performance suspension with Multimatic DSSV™ (Dynamic Suspensions Spool Valve) dampers, Red-painted Brembo brake calipers, 19" 5-split-spoke low-gloss Black-painted forged-aluminum wheels, Goodyear Eagle F1 SuperCar 3R 305/30R19 front and 325/30R19 rear summer-only tires;³ Satin Black hood wrap, low-gloss Black outside rearview mirrors, unique front splitter and front dive planes with lower daytime running lamps deleted, exposed-weave carbon-fiber hood insert and rear wing spoiler, and fixed rear seat; includes specific gear ratios with 6-speed manual transmission (requires available copper-free brake system for California and Washington state)

- - - - - - - - ○¹

¹ Coupe only. ² Do not use summer-only tires in winter conditions, as it would adversely affect vehicle safety, performance and durability. Use only GM-approved tire and wheel combinations. Unapproved combinations may change the vehicle's performance characteristics. For important tire and wheel information, go to chevrolet.com/support/vehicle/driving-safety/tires-wheels/tire-types or see your dealer. ³ Driving on wet roads, in heavy rain, or through standing water with competition-oriented tires may cause hydroplaning and loss of control. Use extreme caution and drive slowly on wet roads.

MAXIMUM CAPACITIES

Fuel tank (approximate)	19.0 gallons
Seating (front/rear)	Seats 2/2
Cargo volume ¹	9.1 cubic feet – Coupe 7.3 cubic feet – Convertible

EPA-ESTIMATED FUEL ECONOMY

2.0L Turbo	19 MPG city/28 highway/22 combined (manual) 22 MPG city/30 highway/25 combined (automatic)
3.6L	16 MPG city/26 highway/20 combined (manual) 18 MPG city/29 highway/22 combined (automatic)

6.2L LT1	16 MPG city/24 highway/19 combined (manual) 16 MPG city/26 highway/20 combined (automatic)
6.2L LT4 supercharged	14 MPG city/20 highway/16 combined (manual) 13 MPG city/21 highway/16 combined (automatic)

DIMENSIONS

Wheelbase	110.7"
Length	188.3" – LS, LT, LT1 and SS 190.2" – ZL1
Height	53.1" – LS, LT, LT1 and SS Coupe 52.9" – LT, LT1 and SS Convertible and ZL1 Coupe 52.6" – ZL1 Convertible

Front track	62.5" – LS, LT and LT1 63.0" – SS 63.4" – ZL1
Rear track	63.7" – LS, LT and LT1 62.9" – SS 62.0" – ZL1
Width	74.7" – LS, LT, LT1 and SS 75.0" – ZL1

Head room (front)	38.5" – Coupe 38.4" – Convertible
Leg room (front)	43.9"

CURB WEIGHT

LS/LT (WITH 2.0L TURBO)

3,351 lbs. (manual 1LS Coupe)
3,332 lbs. (automatic 1LS Coupe)
3,354 lbs. (manual 1LT Coupe)
3,334 lbs. (automatic 1LT Coupe)
3,627 lbs. (manual 1LT Convertible)
3,607 lbs. (automatic 1LT Convertible)
3,374 lbs. (manual 2LT and 3LT Coupe)
3,354 lbs. (automatic 2LT and 3LT Coupe)
3,638 lbs. (manual 2LT and 3LT Convertible)
3,618 lbs. (automatic 2LT and 3LT Convertible)

LT (WITH 3.6L)

3,411 lbs. (manual 1LT Coupe)
3,418 lbs. (automatic 1LT Coupe)
3,684 lbs. (manual 1LT Convertible)
3,691 lbs. (automatic 1LT Convertible)
3,431 lbs. (manual 2LT and 3LT Coupe)
3,438 lbs. (automatic 2LT and 3LT Coupe)
3,695 lbs. (manual 2LT and 3LT Convertible)
3,702 lbs. (automatic 2LT and 3LT Convertible)

LT1/SS/SS 1LE

3,619 lbs. (manual LT1 Coupe)²
3,865 lbs. (manual LT1 Convertible)³
3,685 lbs. (manual 1SS Coupe)⁴
3,932 lbs. (manual 1SS Convertible)⁵
3,696 lbs. (manual 2SS Coupe)⁶
3,937 lbs. (manual 2SS Convertible)⁷
3,754 lbs. (manual 1SS 1LE)⁸
3,762 lbs. (manual 2SS 1LE)⁹

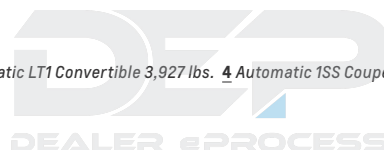
ZL1/ZL1 1LE

3,907 lbs. (manual ZL1 Coupe)
3,938 lbs. (automatic ZL1 Coupe)
4,120 lbs. (manual ZL1 Convertible)
4,151 lbs. (automatic ZL1 Convertible)
3,853 lbs. (manual ZL1 1LE)
3,883 lbs. (automatic ZL1 1LE)

WEIGHT DISTRIBUTION (F/R)

LS/LT	LT	LT1/SS/SS 1LE	ZL1/ZL1 1LE
52/48	52/48	54/46	54/46

¹ Cargo and load capacity limited by weight and distribution. ² Automatic LT1 Coupe 3,681 lbs. ³ Automatic LT1 Convertible 3,927 lbs. ⁴ Automatic 1SS Coupe 3,747 lbs. ⁵ Automatic 1SS Convertible 3,993 lbs. ⁶ Automatic 2SS Coupe 3,757 lbs. ⁷ Automatic 2SS Convertible 3,999 lbs. ⁸ Automatic 1SS 1LE 3,816 lbs. ⁹ Automatic 2SS 1LE 3,823 lbs.

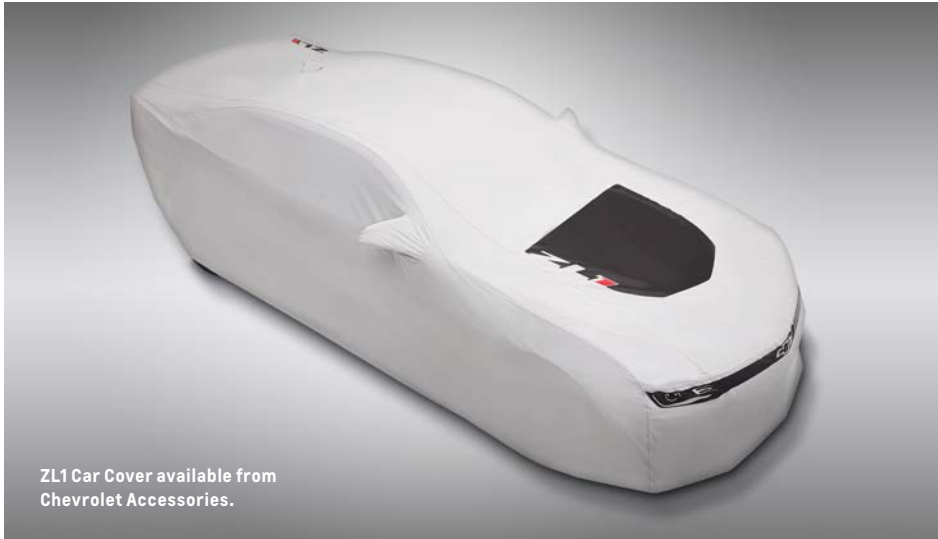




Blade Spoiler in Carbon Flash Metallic available from Chevrolet Accessories.



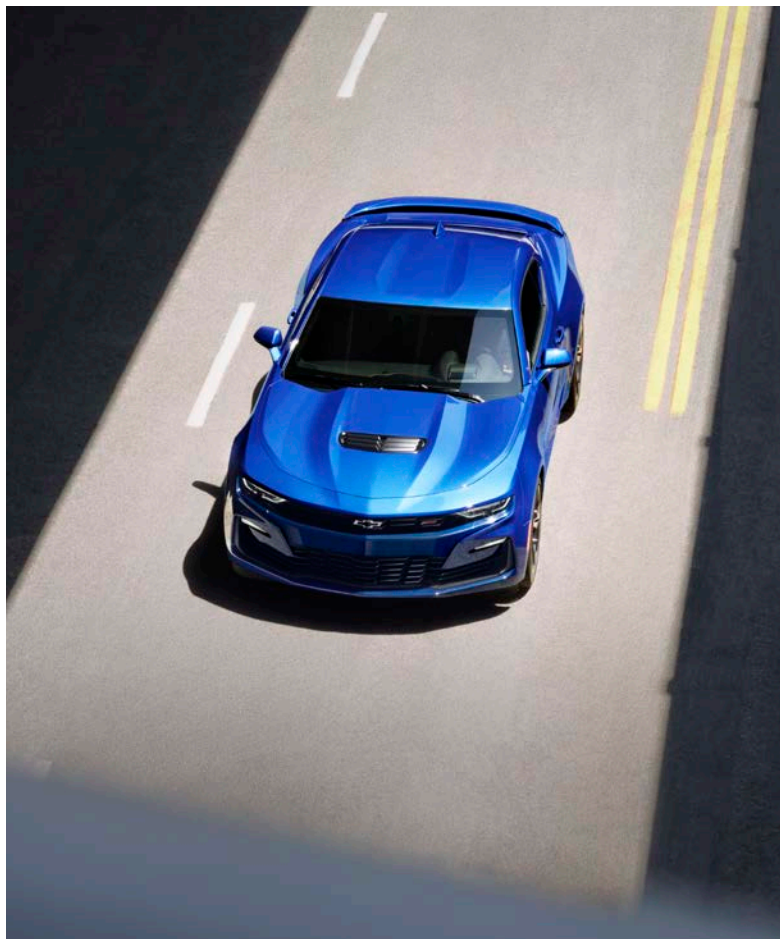
Black Lower Grille with Red Hot-Painted Inserts available from Chevrolet Accessories.



ZL1 Car Cover available from Chevrolet Accessories.



Second Generation Ground Effects in Carbon Flash and Hood Stripe in Satin Black with Silver Ice Metallic Hash Mark available from Chevrolet Accessories.



Important information.

You may be discovering Chevrolet through a personalized online shopping experience or enjoying every year of vehicle ownership. Either way, we're committed to providing the tools and programs you need to help you get the most out of your journey.

Build & Price >

Create your perfect Chevrolet from start to finish.

Chevy MyWay¹ >

Engage in a real-time virtual video experience with a Chevy product specialist.

Chevrolet Complete Care >

Enjoy an owner benefit program that provides excellent service and support from day one.

My Chevrolet Rewards² >

Unlock a world of appreciation that's all about you and your Chevrolet. Start earning and redeeming today.

Limited Warranty Coverage >

Discover all the ways Chevrolet is committed to providing an excellent ownership experience.



GM, the GM logo, Chevrolet, the Chevrolet logo, and the slogans, emblems, vehicle model names, vehicle body designs and other marks appearing in this brochure are the trademarks and/or service marks of General Motors, its subsidiaries, affiliates or licensors. ©2022 OnStar LLC. All rights reserved. Sirius, XM, SiriusXM and all related marks and logos are trademarks of Sirius XM Radio Inc. Amazon, Alexa and all related marks are trademarks of Amazon.com, Inc. or its affiliates. The Bluetooth word mark is a registered trademark owned by Bluetooth SIG, Inc., and any use of such mark by Chevrolet is under license. Bose is a registered trademark of the Bose Corp. Brembo is a registered trademark of Brembo S.p.A. RECARO is a registered trademark of RECARO GmbH & Co. Goodyear Eagle and SuperCar are registered trademarks of The Goodyear Tire & Rubber Company.

©2022 General Motors. All rights reserved. September 2022

FIND NEW ROADS™

CHEVROLET.COM

¹ Chevy MyWay is available to anyone over 18 in the United States to access and experience via chevrolet.com/myway. ² Must be 18 years or older. Points may be earned and redeemed only at GM entities, My Chevrolet Rewards participating dealers or third party retailers in the United States (excluding Puerto Rico, the U.S. Virgin Islands or Guam). Points are not earned on taxes, fees or body shop repair orders and expire without further notice upon Member Account deactivation. Visit myChevroletrewards.com to view My GM Rewards Terms & Conditions.

DEALER ePROCESS