

# YUKON

2021 GMC

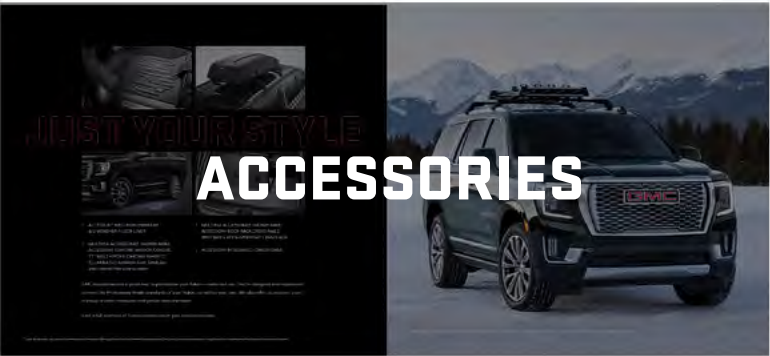
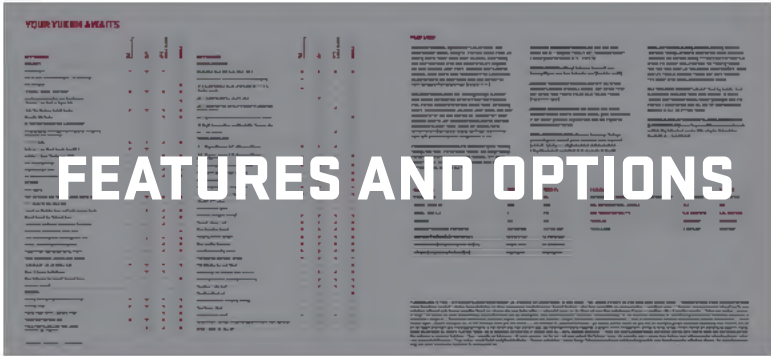
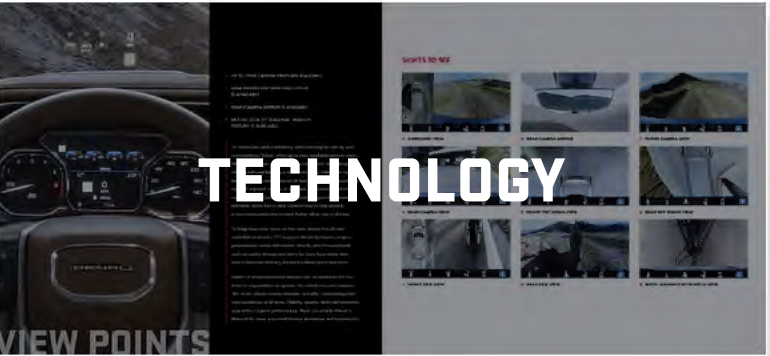
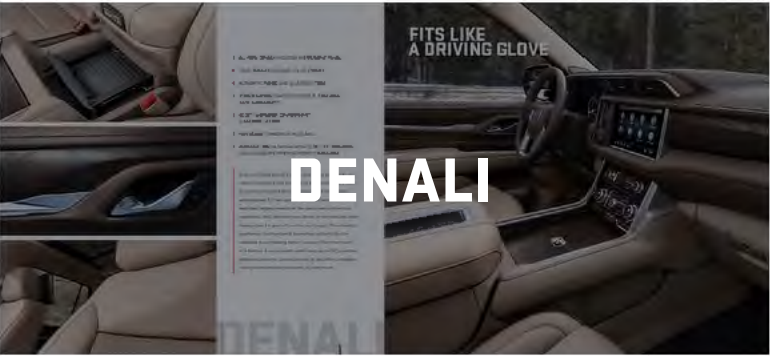
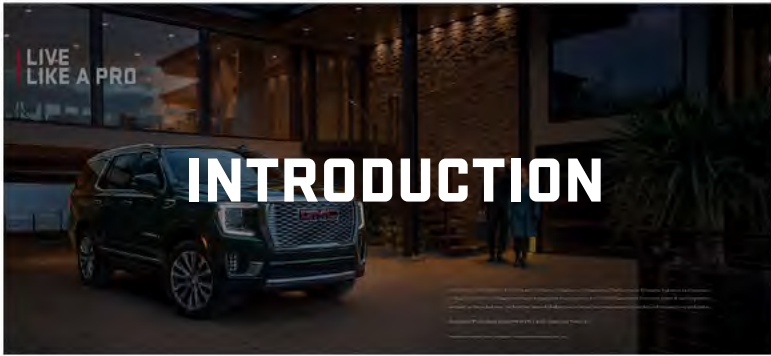


**GMC**  
WE ARE PROFESSIONAL GRADE



# YUKON

CONTENTS





# LIVE LIKE A PRO



Living large is no small feat. Pros do it with confidence and plenty of companions. Whether they're hitting the highways (and fairways), pulling their passions, catching their limit or bagging that trophy, pros do it all. The Next Generation Yukon and Yukon XL were inspired by and built for them. And now, the First Ever Yukon AT4 allows pros to follow their imagination to travel beyond the paved and predictable.

Experience Professional Grade—the 2021 GMC Yukon and Yukon XL.

Preproduction models shown throughout. Actual production models may vary.



# MADE TO REIGN

## FIRST-CLASS EXPERIENCE

- EXCLUSIVE INTERIOR ON DENALI
- POWER-SLIDING CENTER CONSOLE IS AVAILABLE (LATE AVAILABILITY)
- FOUR-CORNER AIR RIDE ADAPTIVE SUSPENSION IS AVAILABLE (LATE AVAILABILITY)

## TECHNOLOGY

- MULTICOLOR 15" DIAGONAL HEAD-UP DISPLAY IS AVAILABLE
- UP TO NINE CAMERA VIEWS<sup>1</sup> ARE AVAILABLE

## PROFESSIONAL GRADE CAPABILITY

- 6.2L 420-HP V8 ENGINE ON DENALI
- ALL-NEW ACTIVE RESPONSE 4WD™ SYSTEM IS AVAILABLE (LATE AVAILABILITY)

The Next Generation 2021 Yukon is ready for anything. Designed to be bigger and bolder than ever,<sup>2</sup> it delivers first-class accommodations for up to nine, available technologies and legendary Professional Grade capability. Travel in the premium-packed Yukon Denali or give free rein to your wanderlust by traveling beyond the predictable—and the paved—in the First Ever Yukon AT4.

<sup>1</sup>Read the vehicle Owner's Manual for important feature limitations and information.    <sup>2</sup>Based on overall dimensions.







- ALL-NEW DENALI-EXCLUSIVE INSTRUMENT PANEL
- FOUR DENALI-EXCLUSIVE COLOR THEMES
- AUTHENTIC WOOD AND ALUMINUM TRIM
- POWER-SLIDING CENTER CONSOLE IS AVAILABLE (LATE AVAILABILITY)
- BOSE® 14-SPEAKER CENTERPOINT® SURROUND SOUND
- PANORAMIC SUNROOF IS AVAILABLE
- REAR-SEAT MEDIA SYSTEM WITH DUAL 12.6" DIAGONAL HIGH-DEFINITION TOUCH-SCREENS IS AVAILABLE

Step into Yukon Denali's cabin and you're greeted by an interior designed and tailored to your taste. You'll find an instrument panel that is exclusive to Yukon Denali and designed for the optimal display of both information and style, helping transform the space into a first-class experience. You'll also find your choice of four exclusive color themes (see for yourself on the next page). This elevated experience continues with innovative features like the available power-sliding center console. With the touch of a button, it conveniently slides back up to 10", providing additional room for personal items. It also offers a hidden storage compartment securable in valet mode.

# DENALI





# DENALI. EXCLUSIVELY.

To help you feel truly at home in Yukon Denali, you can personalize it in your choice of four distinctive color themes featuring premium leather appointments and authentic wood details. The leather appointments are highlighted by Denali-exclusive Fractal stitching, which uses contrasting thread to create a meticulous X-stitch pattern.



JET BLACK/JET BLACK



DARK WALNUT/VERY DARK ASH GRAY



BROWNSTONE/JET BLACK



TEAK/LIGHT SHALE





# DESIGNED TO SPEAK VOLUMES

With merely a glance, the Next Generation Yukon Denali leaves you speechless—while its sculpted curves say: outgoing, strong, well-defined, spacious, active and capable.

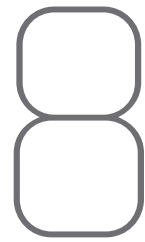


- DESIGNED TO BE BIGGER AND BOLDER THAN EVER<sup>1</sup>
- DUAL EXHAUST SYSTEM WITH DUAL TWIN-POLISHED STAINLESS-STEEL TIPS (GAS ENGINE ONLY)
- LED HEADLAMPS AND TAILLAMPS WITH SIGNATURE C-SHAPE LIGHTING
- SATIN CHROME GRILLE, BODYSIDE MOLDING, DOOR HANDLES AND FOG-LAMP SURROUND
- 20" POLISHED ALUMINUM WHEELS; 22" BRIGHT MACHINED ALUMINUM WHEELS ARE AVAILABLE
- ILLUMINATED POWER-RETRACTABLE ASSIST STEPS ARE AVAILABLE
- FOUR-CORNER AIR RIDE ADAPTIVE SUSPENSION IS AVAILABLE (LATE AVAILABILITY)

<sup>1</sup>Based on overall dimensions.







# FIRST EVER YUKON AT4: RISE TO THE ADVENTURE



# AT4

- AT4-SPECIFIC FRONT DESIGN FEATURES  
SKID PLATE AND APPROACH ANGLE OF  
NEARLY 32 DEGREES
- FOUR-CORNER AIR RIDE ADAPTIVE  
SUSPENSION IS AVAILABLE (LATE AVAILABILITY)
- ALL-NEW ACTIVE RESPONSE 4WD SYSTEM  
IS AVAILABLE (LATE AVAILABILITY)
- 20" ALL-TERRAIN TIRES
- YUKON AT4 AVAILABLE FALL 2020

Explore roads never traveled. The First Ever Yukon AT4 takes capability head-on with an increased front-approach angle. The all-new available four-corner Air Ride Adaptive Suspension can raise Yukon AT4 up to 2" to improve ground clearance. Conquer the conditions with greater confidence thanks to AT4's 2-speed AutoTrac transfer case, Hill Descent Control and an all-new available Active Response 4WD system. It helps you maneuver in slick or off-road environments by seamlessly sending optimal torque to each wheel for improved traction. Connecting Yukon AT4 to the ground are 20" all-terrain tires.







# ROUGHING IT REFINED

## EXCLUSIVE AT4 CABIN OFFERS:

- DURABLE JET BLACK INTERIOR WITH BRANDY SEAT AND STITCHING ACCENTS
- EXCLUSIVE DARK BRUSHED ALUMINUM DETAILS
- HEATED AND VENTILATED FRONT PERFORATED LEATHER SEATING SURFACES
- MULTICOLOR 15" DIAGONAL HEAD-UP DISPLAY WITH AN OFF-ROAD INCLINOMETER IS AVAILABLE
- HIGH DEFINITION SURROUND VISION IS AVAILABLE



Yukon AT4 features an athletic Jet Black interior with AT4-exclusive Brandy accents and dark brushed aluminum details. Enhance every drive with heated and ventilated front perforated leather seating surfaces that include embroidered AT4 badging on the front-seat head restraints.

Help keep your eyes on the trail with the available multicolor 15" diagonal Head-Up Display. Vital information is projected directly onto the windshield, including an Off-Road Inclinometer that measures vehicle grade and tilt. And the available High Definition Surround Vision uses multiple cameras to display a digital overhead image of the area around your Yukon AT4. It helps you maneuver off road and navigate tight spaces when traveling at low speeds.

Safety or driver-assistance features are no substitute for the driver's responsibility to operate the vehicle in a safe manner. The driver should remain attentive to traffic, surroundings and road conditions at all times. Visibility, weather and road conditions may affect feature performance. Read the vehicle Owner's Manual for more important feature limitations and information.





- UP TO NINE CAMERA VIEWS ARE AVAILABLE
- HIGH DEFINITION SURROUND VISION IS AVAILABLE
- REAR CAMERA MIRROR IS AVAILABLE
- MULTICOLOR 15" DIAGONAL HEAD-UP DISPLAY IS AVAILABLE

To maneuver with confidence while keeping an eye on your surroundings, Yukon offers up to nine available camera views. They help improve your view in situations such as hooking up, driving with and backing a trailer into place, fitting into tight parking spaces, navigating out of your driveway and negotiating rugged unpaved terrain. In addition, flip a switch and the available Rear Camera Mirror transforms your traditional rearview mirror into a wide camera view to help provide a less-obstructed view behind Yukon while you're driving.

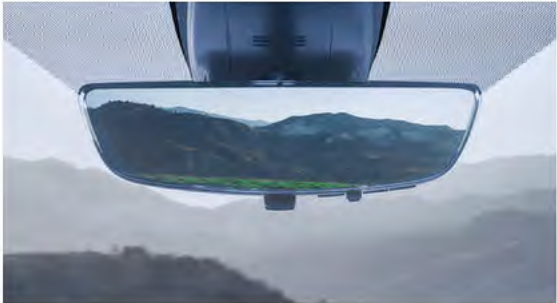
To help keep your focus on the road ahead, the all-new available multicolor 15" diagonal Head-Up Display projects personalized vehicle information directly onto the windshield, such as audio settings and alerts for Lane Keep Assist with Lane Departure Warning, Forward Collision Alert and more.

Safety or driver-assistance features are no substitute for the driver's responsibility to operate the vehicle in a safe manner. The driver should remain attentive to traffic, surroundings and road conditions at all times. Visibility, weather and road conditions may affect feature performance. Read the vehicle Owner's Manual for more important feature limitations and information.

SIGHTS TO SEE



1 SURROUND VIEW



2 REAR CAMERA MIRROR



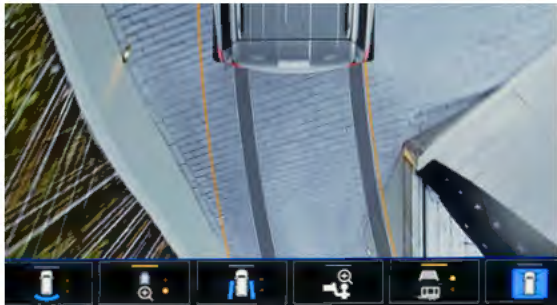
3 FRONT CAMERA VIEW



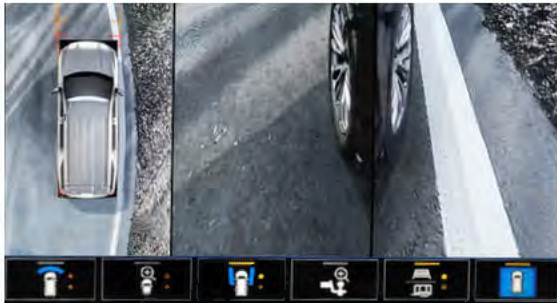
4 REAR CAMERA VIEW



5 FRONT TOP-DOWN VIEW



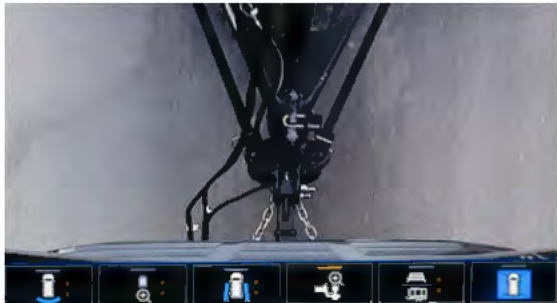
6 REAR TOP-DOWN VIEW



7 FRONT SIDE VIEW



8 REAR SIDE VIEW



9 HITCH GUIDANCE WITH HITCH VIEW



# MEDIA SAVVY

- IN-DASH 10.2" DIAGONAL PREMIUM GMC INFOTAINMENT SYSTEM<sup>1</sup> WITH AVAILABLE NAVIGATION<sup>2</sup> AND SIRIUSXM® WITH 360L<sup>3</sup>
- 8" DIAGONAL DIGITAL DRIVER INFORMATION CENTER
- REAR-SEAT MEDIA SYSTEM WITH DUAL 12.6" DIAGONAL HIGH-DEFINITION TOUCH-SCREENS IS AVAILABLE
- WIRELESS APPLE CARPLAY™<sup>4</sup> COMPATIBILITY
- WIRELESS ANDROID AUTO™<sup>5</sup> COMPATIBILITY
- AMAZON ALEXA BUILT-IN<sup>6</sup> IS AVAILABLE
- WIRELESS CHARGING<sup>7</sup> IS AVAILABLE

Yukon’s state-of-the-art technologies are designed to keep everyone entertained. The Premium GMC Infotainment System<sup>1</sup> with available Navigation<sup>2</sup> has a 10.2" diagonal touch-screen and a simplified interface that’s more intuitive than ever before. Connect two devices at once using Bluetooth,<sup>8</sup> with storage for up to 10 customizable user settings.

Yukon is also the first GMC vehicle with wireless phone projection so you can activate wireless Apple CarPlay™<sup>4</sup> and wireless Android Auto<sup>5</sup> without connecting your phone by wire or cable.

And now, Amazon Alexa travels with you. Available Alexa Built-In<sup>6</sup> helps you play music, get directions, place calls, control your smart home and more—all with your voice. Alexa functionality is fully integrated into your Yukon’s infotainment system.<sup>1</sup> Simply use voice commands to connect to your music service,

send directions to your available Navigation<sup>2</sup> system (if equipped), make phone calls, check your calendar or to-do lists, add items to your Whole Foods shopping cart and stay current on the latest news and sports updates.

Rear-seat passengers will enjoy the all-new available Rear-Seat Media System featuring dual 12.6" diagonal high-definition touch-screens integrated into the back of the front seats.

The 1080-pixel displays tilt 18 degrees up and 12 degrees down for an optimized viewing angle. Users can sync and play video, audio and games from personal devices through USB<sup>9</sup> or HDMI ports, with content customized independently for each screen. Rear-seat passengers can even suggest destinations and send navigation directions to the front infotainment screen, helping the driver remain focused on the road.



<sup>1</sup>Functionality varies by model. Full functionality requires compatible Bluetooth and smartphone, and USB connectivity for some devices. <sup>2</sup>Map coverage available in the United States, Puerto Rico and Canada. <sup>3</sup>Certain features require a SiriusXM subscription and the GMC Connected Access plan. See [siriusxm.com](http://siriusxm.com) and [onstar.com](http://onstar.com) for details and limitations. If you decide to continue service after your trial, the subscription plan you choose will automatically renew thereafter and you will be charged according to your chosen payment method at then-current rates. Fees and taxes apply. See the SiriusXM Customer Agreement at [siriusxm.com](http://siriusxm.com) for complete terms and how to cancel. All fees, content, features and availability are subject to change. ©2020 SiriusXM Radio, Inc. SiriusXM, Automatic, Pandora and all related logos are trademarks of SiriusXM Radio, Inc., and its respective subsidiaries. <sup>4</sup>Vehicle user interface is a product of Apple® and its terms and privacy statements apply. Requires compatible iPhone® and data plan rates apply. Apple CarPlay is a trademark of Apple, Inc. Siri, iPhone and Apple Music are trademarks of Apple, Inc., registered in the U.S. and other countries. <sup>5</sup>Vehicle user interface is a product of Google™ and its terms and privacy statements apply. Requires the Android Auto app on Google Play and a compatible Android™ smartphone. Data plan rates apply. You can check which smartphones are compatible at [g.co/androidauto/requirements](http://g.co/androidauto/requirements). Android Auto is a trademark of Google LLC. <sup>6</sup>Functionality is subject to limitations and varies by vehicle, infotainment system and location. Select service plan required. Certain Alexa Skills require account linking to use. Certain Alexa functionality is dependent on smart home technology. Amazon, Alexa and all related marks are trademarks of Amazon.com, Inc., or its affiliates. See [onstar.com](http://onstar.com) for additional details. <sup>7</sup>The system wirelessly charges one compatible mobile device. Some phones have built-in wireless charging technology and others require a special adapter/back cover. To check for phone or other device compatibility, see [my.gmc.com/learn](http://my.gmc.com/learn) or consult your carrier. <sup>8</sup>Go to [my.gmc.com/learnabout/bluetooth](http://my.gmc.com/learnabout/bluetooth) to find out which phones are compatible with the vehicle. Full Bluetooth feature functionality varies by device, model and software version. <sup>9</sup>Not compatible with all devices.







# ENGINEERED PEACE OF MIND



**GMC PRO SAFETY PLUS STANDARD ON SLT, AT4 AND DENALI INCLUDES:**

- LANE CHANGE ALERT WITH SIDE BLIND ZONE ALERT
- AUTOMATIC EMERGENCY BRAKING
- FRONT PEDESTRIAN BRAKING
- LANE KEEP ASSIST WITH LANE DEPARTURE WARNING
- FORWARD COLLISION ALERT
- INTELLIBEAM—AUTO HIGH BEAMS
- REAR CROSS TRAFFIC ALERT
- FRONT AND REAR PARK ASSIST
- FOLLOWING DISTANCE INDICATOR

Safety or driver-assistance features are no substitute for the driver's responsibility to operate the vehicle in a safe manner. The driver should remain attentive to traffic, surroundings and road conditions at all times. Visibility, weather and road conditions may affect feature performance. Read the vehicle Owner's Manual for more important feature limitations and information.



The best way to handle a collision is to avoid it. With available safety and driver-assistance technologies around Yukon—front to back, side to side and even a digital overhead image of the area around the SUV with available High Definition Surround Vision—it's engineered to help you drive confidently.

Discover more of Yukon's safety features at [gmc.com/yukon/safety](https://gmc.com/yukon/safety).







# CRUISING ATTITUDE

Powering Yukon is the 6.2L V8 engine—exclusively on Denali—delivering 420 hp. This smart, advanced engine is paired with a 10-speed automatic transmission to produce 460 lb-ft of torque. From there, the all-new available Active Response 4WD system helps you confidently maneuver in slick or off-road conditions by seamlessly sending optimal torque to each wheel for improved traction.

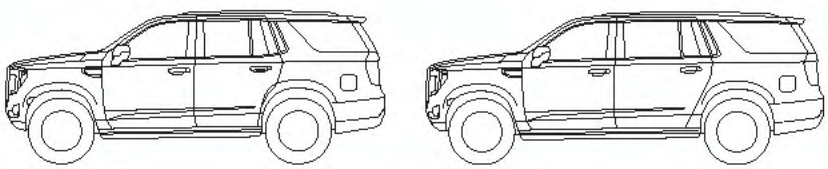
- 6.2L V8 WITH 420 HP AND 460 LB-FT OF TORQUE (DENALI-EXCLUSIVE)
- 10-SPEED AUTOMATIC TRANSMISSION PAIRED WITH ALL ENGINES
- 5.3L V8 WITH 355 HP AND 383 LB-FT OF TORQUE
- ALL-NEW ACTIVE RESPONSE 4WD SYSTEM IS AVAILABLE (LATE AVAILABILITY)
- ALL-NEW 3.0L DURAMAX TURBO DIESEL IS AVAILABLE (LATE AVAILABILITY)







# BEYOND COMPARISON, EXCEPT TO ITSELF



The Next Generation Yukon has a lot to love, but for an even more spacious cabin, flexible cargo capacity and greater fuel tank capacity, there's the Next Generation Yukon XL. It upsizes Yukon's capability, offering even more cargo room behind the first, second and third rows.

For generous, easily accessible cargo room with both rear rows folded down, Yukon gives you up to 122.9 cu. ft.<sup>1</sup> and Yukon XL offers up to 144.7 cu. ft.<sup>1</sup>

For easier access to all of this space when your hands are full, the available hands-free programmable power liftgate with GMC logo projection opens with just a kick of your foot. Second-row seats offer an available power-release fold-and-tumble feature, while available third-row power fold-flat seats complete the transition from passengers to cargo.

Plus, both Yukon and Yukon XL offer seating for up to nine with SLE's optional front bench seat.

<sup>1</sup>Cargo and load capacity limited by weight and distribution.







Yukon is engineered so you can bring your hobbies—up to 8,400 lbs<sup>1</sup>—with you. Confidence also travels with you with the available ProGrade™ Trailering System. It helps you keep tabs on Yukon and your trailer with up to nine available camera views.<sup>2</sup> And with the available in-vehicle Trailering App<sup>3</sup> integrated into Yukon's infotainment system,<sup>4</sup> you can create trailer profiles and find maintenance reminders, predeparture checklists, a Trailer Light Sequence Test and a Trailer Tire Pressure Monitoring System.<sup>5</sup>

# TAKE YOUR PASSIONS WITH YOU

## UP TO 8,400 LBS<sup>1</sup>

<sup>1</sup>Requires Yukon 2WD with 5.3L engine and available Max Trailering Package. Before you buy a vehicle or use it for trailering, carefully review the trailering section of the Owner's Manual. The weight of passengers, cargo and options or accessories may reduce the amount you can tow. <sup>2</sup>Read the vehicle Owner's Manual for important feature limitations and information. <sup>3</sup>App functionality and features vary with vehicle equipment and trim level. Data connection may be required. Some features require active service plan and working electrical system. User terms and limitations apply. <sup>4</sup>Functionality varies by model. Full functionality requires compatible Bluetooth and smartphone, and USB connectivity for some devices. <sup>5</sup>Requires available Trailer Tire Pressure Monitoring System and installation of trailer tire pressure monitor sensors.







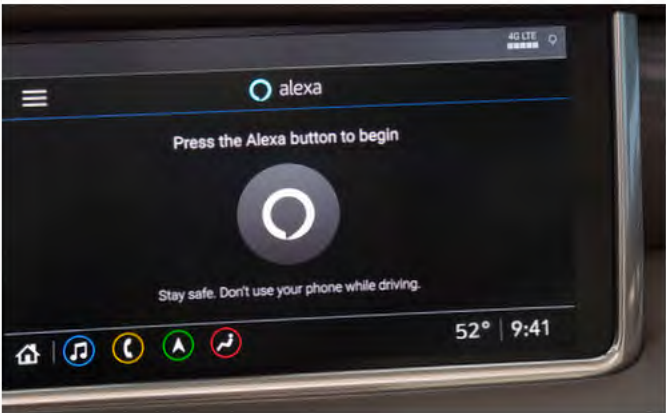
# IN TOUCH. IN COMMAND.



YUKON OFFERS:

- 1 GMC CONNECTED SERVICES<sup>1</sup>
- 2 ONSTAR® SAFETY AND SECURITY<sup>2</sup>
- 3 myGMC MOBILE APP<sup>3</sup>
- 4 AMAZON ALEXA BUILT-IN<sup>4</sup>
- 5 4G LTE WI-FI® HOTSPOT<sup>5</sup>
- 6 WIRELESS APPLE CARPLAY™<sup>6</sup> COMPATIBILITY
- 7 WIRELESS ANDROID AUTO<sup>7</sup> COMPATIBILITY
- 8 IN-VEHICLE APPS<sup>8</sup> SUCH AS SPOTIFY®<sup>9</sup>

<sup>1</sup>Connected services vary by vehicle model and require active service plan, working electrical system, cell reception and GPS signal. Does not include emergency or security services. See onstar.com for details and limitations. <sup>2</sup>OnStar plan, working electrical system, cell reception and GPS signal required. OnStar links to emergency services. See onstar.com for details and limitations. <sup>3</sup>Available on select Apple® and Android devices. Service availability, features and functionality vary by vehicle, device and the plan you are enrolled in. Terms apply. Device data connection required. See onstar.com for details and limitations. <sup>4</sup>Functionality is subject to limitations and varies by vehicle, infotainment system and location. Select service plan required. Certain Alexa Skills require account linking to use. Amazon, Alexa, Amazon Music and all related marks are trademarks of Amazon.com, Inc., and its affiliates. See onstar.com for additional details. <sup>5</sup>Service varies with conditions and location. Requires active service plan and paid AT&T® data plan. See onstar.com for details and limitations. <sup>6</sup>Vehicle user interface is a product of Apple® and its terms and privacy statements apply. Requires compatible iPhone® and data plan rates apply. Apple CarPlay is a trademark of Apple, Inc. Siri, iPhone and Apple Music are trademarks of Apple, Inc., registered in the U.S. and other countries.



**MORE CONFIDENCE, MORE CONNECTIVITY, MORE CHOICE**

Prepare for the unexpected and enjoy the seamless experience of a completely connected drive. GMC Connected Services offers you an elevated ownership experience. And with available OnStar, you get added peace of mind knowing an Emergency-Certified Advisor<sup>10</sup> is ready to help 24/7.

**24/7 LIFELINE** When the unexpected happens, the last thing you want to be is alone. With OnStar, you can have added peace of mind knowing help is only a button-push away. The available OnStar Safety & Security Plan<sup>2</sup> provides 24/7 access to a specially trained OnStar Advisor who can help in the event of a crash, vehicle theft,<sup>11</sup> emergency or other unexpected situation you may encounter on the road. If a vehicle crash is detected, available Automatic Crash Response<sup>12</sup> can alert an Emergency-Certified Advisor<sup>10</sup> who can send help, even if you can't ask for it. Drive with added confidence knowing a real person is always ready to help.

**myGMC MOBILE APP** Convenience, command and control, in or out of your vehicle. With the available myGMC mobile app,<sup>3</sup> you can start your engine, check fuel levels and tire pressure and even

personalize your vehicle by setting radio station favorites and installing in-vehicle apps<sup>8</sup>—all from your smartphone. You can also schedule service appointments, learn driving tips and more.

**EXPLORE MORE, ALEXA'S ON BOARD** The Alexa functionality you enjoy at home is now fully integrated into your GMC Infotainment System.<sup>13</sup> With available Alexa Built-In,<sup>4</sup> you can use voice commands to stream your favorite music services such as Spotify<sup>9</sup> or Amazon Music, get directions, make calls, change your radio station and get routes to the nearest dealership—on the go. Alexa can also make shopping lists, play and resume audiobooks and get the score to last night's game.

**WIRELESS, SEAMLESS, EFFORTLESS** Convenient cordless control is yours with wireless Apple CarPlay™ compatibility.<sup>6</sup> Without plugging in a single wire, Apple CarPlay™ connects your iPhone® to Yukon's infotainment screen, allowing access to Apple Music,™ Apple Maps, Siri® and other functions. The same goes for wireless Android Auto compatibility,<sup>7</sup> which connects you to Google Maps,™ Google Play Music, Google Assistant™ and plenty more resources through your Android phone.

<sup>7</sup>Vehicle user interface is a product of Google and its terms and privacy statements apply. Requires the Android Auto app on Google Play and a compatible Android smartphone. Data plan rates apply. You can check which smartphones are compatible at g.co/androidauto/requirements. Google, Android Auto and Google Maps are trademarks of Google LLC. <sup>8</sup>Available on select 2017 model year and newer GM vehicles with compatible hardware. Third-party trademarks are the property of their respective third-party owners and used under agreement. Requires active service plan and paid AT&T vehicle data plan. See onstar.com for details and limitations. <sup>9</sup>Requires premium subscription to use Spotify. Visit spotify.com/auto on your smartphone, tablet or computer to purchase a Premium Spotify subscription. Available only on vehicles equipped with an iOS, iOJ or IOT infotainment system. <sup>10</sup>OnStar Emergency Advisors are certified by the International Academies of Emergency Dispatch. <sup>11</sup>Requires armed GM factory-installed theft-deterrent system and enrollment to receive alerts. Additional texting and data rates apply. Doesn't prevent theft, damage or loss. <sup>12</sup>Not all vehicles may transmit all crash data. <sup>13</sup>Functionality varies by model. Full functionality requires compatible Bluetooth and smartphone, and USB connectivity for some devices.



YOUR YUKON AWAITS

KEY FEATURES	SLE (Late Availability)	SLT	AT4 (Late Availability)	DENALI
CAPABILITY				
5.3L V8 Engine	●	●	●	—
3.0L Duramax Turbo Diesel Engine (Late Availability)	○	○	—	○
6.2L V8 Engine	—	—	—	●
10-Speed Automatic Transmission	●	●	●	●
Dual Exhaust System With Dual Twin-Polished Stainless-Steel Tips (Gas Engine Only)	—	—	—	●
StabiliTrak Electronic Stability Control	●	●	●	●
Magnetic Ride Control	—	—	●	●
Air Ride Adaptive Suspension (Late Availability)	—	—	○	○
Active Response 4WD™ System With Electronic Limited-Slip Differential (Late Availability)	—	—	○	○
3.23 Axle Ratio	●	●	●	●
AutoTrac Single-Speed Transfer Case (4WD)	●	●	—	—
AutoTrac 2-Speed Transfer Case (4WD)	○	○	●	●
Max Trailering Package	○	○	○	○
High-Capacity Air Filter	—	—	●	—
Hill Descent Control (4WD)	—	—	●	●
INTERIOR				
Cloth Seating	●	—	—	—
First- and Second-Row Perforated Leather Seating Surfaces	—	●	●	●
Front 40/20/40 Split Bench Seat	○	—	—	—
Heated and Ventilated Driver and Front-Passenger Seats	—	●	●	●
Heated Second-Row Outboard Seats	—	○	●	●
Second-Row 60/40 Split Power-Release Bench Seat	—	○	●	○
Second-Row Power-Release Bucket Seats	—	○	○	●
Third-Row 60/40 Split Power-Folding Bench Seat	—	○	●	●
Heated, Leather-Wrapped Steering Wheel	—	○	●	●
Power-Tilt and -Telescoping Steering Column	—	○	●	●
Power-Sliding Center Console (Late Availability)	—	○	○	○
Tri-Zone Automatic Climate Controls	●	●	●	●
Bose® 9-Speaker Audio System	—	●	●	—
Bose 14-Speaker Centerpoint® Surround Sound	—	—	—	●
Panoramic Sunroof	—	○	○	○
EXTERIOR				
LED Signature Lighting (Headlamps/Taillamps)	●	●	●	●
LED Fog Lamps	●	●	●	●
Heated, Power-Folding Adjustable Mirrors	—	○	●	●
Rainsense Windshield Wipers	●	●	●	●
Hands-Free Programmable Power Liftgate With GMC Logo Projection	—	●	●	●

● Standard   ○ Available   — Not Available

KEY FEATURES	SLE (Late Availability)	SLT	AT4 (Late Availability)	DENALI
EXTERIOR CONTINUED				
Assist Steps, Black With Gloss-Black Inserts	●	●	●	●
Power-Retractable Assist Steps With Perimeter Lighting	—	—	○	○
18" 6-Spoke Machined Aluminum Wheels With Dark Gray Metallic Accents	●	—	—	—
20" 6-Spoke Polished Aluminum Wheels	○	●	—	—
20" 6-Spoke Machined Aluminum Wheels With Carbon Gray Metallic Accents	—	—	●	—
20" 6-Spoke Multidimensional Polished Aluminum Wheels	—	—	—	●
22" Bright Machined Aluminum Wheels With Premium Paint	—	—	—	○
20" All-Terrain Tires	—	—	●	—
TECHNOLOGY & SAFETY				
10.2" Diagonal Premium GMC Infotainment System¹	●	●	●	—
10.2" Diagonal Premium GMC Infotainment System¹ with Navigation²	—	○	○	●
8" Diagonal Digital Driver Information Center	●	●	●	●
Multicolor 15" Diagonal Head-Up Display	—	—	○	●
Wireless Charging³	—	●	●	●
Wireless Apple CarPlay™⁴ Compatibility	●	●	●	●
Wireless Android Auto™⁵ Compatibility	●	●	●	●
4G LTE Wi-Fi® Hotspot⁶	○	○	○	○
Rear-Seat Media System	—	○	○	○
Automatic Emergency Braking⁷	●	●	●	●
Forward Collision Alert⁷	●	●	●	●
Front Pedestrian Braking⁷	●	●	●	●
Following Distance Indicator⁷	●	●	●	●
Front and Rear Park Assist⁷	●	●	●	●
IntelliBeam—Auto High Beams	●	●	●	●
High Definition Rear Vision Camera⁷	●	●	●	—
High Definition Surround Vision⁷	—	○	○	●
Lane Change Alert With Side Blind Zone Alert⁷	○	●	●	●
Lane Keep Assist With Lane Departure Warning⁷	○	●	●	●
Rear Cross Traffic Alert⁷	○	●	●	●
Rear Pedestrian Alert⁷	—	○	○	●
Enhanced Automatic Emergency Braking⁷	—	—	—	○
Rear Camera Mirror⁷	—	—	—	○
Adaptive Cruise Control⁷	—	—	—	○
SiriusXM® With 360L®—All Access Package With 3-Month Trial Subscription	○	○	○	○
OnStar® Safety and Security⁸	○	○	○	○

PACKAGES

**SLT LUXURY PACKAGE** High Definition Surround Vision;⁷ Rear Pedestrian Alert;⁷ memory settings for driver seat, outside mirrors and steering column; heated outside power-adjustable, power-folding, body-color mirrors with driver-side auto-dimming and integrated turn-signal indicators; power-tilt and -telescoping steering column; automatic heated steering wheel; heated second-row outboard seats; second-row 60/40 split power-release bench seat; and third-row 60/40 split power-folding bench seat (Available on SLT)

**SLT LUXURY PLUS PACKAGE** Max Trailering Package; panoramic power sunroof; High Definition Surround Vision;⁷ Rear Pedestrian Alert;⁷ memory settings for driver seat, outside mirrors and steering column; heated outside power-adjustable, power-folding, body-color mirrors with driver-side auto-dimming and integrated turn-signal indicators; power-tilt and -telescoping steering column; automatic heated steering wheel; heated second-row outboard seats; second-row 60/40 split power-release bench seat; and third-row 60/40 split power-folding bench seat (Available on SLT)

**AT4 PREMIUM PLUS PACKAGE (LATE AVAILABILITY)** Max Trailering Package, Rear Media and Navigation Package, Technology Package, Premium Capability Package with Active Response 4WD system, panoramic power sunroof and power-retractable assist steps with perimeter lighting (Available on AT4)

**REAR MEDIA AND NAVIGATION PACKAGE** Rear-Seat Media System and 10.2" diagonal Premium GMC Infotainment System¹ with Navigation² (Available on SLT and AT4)

**TECHNOLOGY PACKAGE** High Definition Surround Vision;⁷ Head-Up Display and Rear Pedestrian Alert⁷ (Available on AT4)

**ADVANCED TECHNOLOGY PACKAGE** Adaptive Cruise Control;⁷ Enhanced Automatic Emergency Braking;⁷ Rear Camera Mirror;⁷ Rear Camera Mirror Washer and Advanced Security Package (Available on Denali)

**ADVANCED SECURITY PACKAGE** Self-powered horn, interior movement sensors, vehicle inclination sensors, glass-break sensors in rear-quarter glass and liftgate window door and liftgate lock shields (Available on Denali)

**DENALI PREMIUM PACKAGE** Advanced Technology Package, panoramic power sunroof, power-retractable assist steps with perimeter lighting, 22" bright machined aluminum wheels with premium paint and wheel locks (Available on Denali)

**DENALI ULTIMATE PACKAGE (LATE AVAILABILITY)** Advanced Technology Package, panoramic power sunroof, power-retractable assist steps with perimeter lighting, 22" bright machined aluminum wheels with premium paint, wheel locks, Max Trailering Package, Rear-Seat Media System, Air Ride Adaptive Suspension (2WD models only) and Premium Capability Package with Active Response 4WD system (4WD models only) (Available on Denali)

**MAX TRAILERING PACKAGE** ProGrade™ Trailering System, Hitch Guidance with Hitch View,⁷ trailer brake controller, in-vehicle Trailering App,¹⁰ enhanced cooling radiator (gas engine only) and AutoTrac 2-speed transfer case (SLE and SLT 4WD models only) (Available on SLE, SLT, AT4 and Denali)

**PREMIUM CAPABILITY PACKAGE WITH ACTIVE RESPONSE 4WD (LATE AVAILABILITY)** Active Response 4WD system with electronic Limited-Slip Differential and Air Ride Adaptive Suspension (Available on AT4 and Denali)

DIMENSIONS	YUKON	YUKON XL
WHEELBASE (in.)	120.9	134.1
OVERALL LENGTH (in.)	210.0	225.2
OVERALL WIDTH (in.)	81.0	81.0
HEIGHT (in.)	76.5	76.5
LEG ROOM (FIRST/SECOND/THIRD ROW) (in.)	44.5/42.0/34.9	44.5/42.0/36.7
HEAD ROOM (FIRST/SECOND/THIRD ROW) (in.)	42.3/38.9/38.2	42.3/38.9/38.2
SHOULDER ROOM (FIRST/SECOND/THIRD ROW) (in.)	66.0/64.8/62.7	66.0/64.8/62.8
HIP ROOM (FIRST/SECOND/THIRD ROW) (in.)	61.5/61.3/49.4	61.5/61.3/49.4

DIMENSIONS	YUKON	YUKON XL
MAX CARGO AREA (BEHIND FIRST/SECOND/THIRD ROW) [cu. ft.]¹	122.9/72.6/25.5	144.7/93.8/41.5
FUEL TANK CAPACITY (GAL., APPROX.)	24.0	28.0
<b>MAX TOWING CAPABILITY</b>	<b>5.3L 2WD/4WD</b>	<b>6.2L 2WD/4WD</b>
YUKON (LBS)	8,400/8,200¹²	8,200/8,000¹²
YUKON XL (LBS)	8,300/8,000¹²	8,100/7,900¹²

¹Functionality varies by model. Full functionality requires compatible Bluetooth® and smartphone, and USB connectivity for some devices.    ²Map coverage available in the United States, Puerto Rico and Canada.    ³The system wirelessly charges one compatible mobile device. Some phones have built-in wireless charging technology and others require a special adapter/back cover. To check for phone or other device compatibility, see my.gmc.com/learn or consult your carrier.    ⁴Vehicle user interface is a product of Apple® and its terms and privacy statements apply. Requires compatible iPhone® and data plan rates apply. Apple CarPlay is a trademark of Apple, Inc. Siri, iPhone and Apple Music are trademarks of Apple, Inc., registered in the U.S. and other countries.    ⁵Vehicle user interface is a product of Google™ and its terms and privacy statements apply. Requires the Android Auto app on Google Play and a compatible Android™ smartphone. Data plan rates apply. You can check which smartphones are compatible at g.co/androidauto/requirements. Android Auto is a trademark of Google LLC.    ⁶Service varies with conditions and location. Requires active service plan and paid AT&T™ data plan. See onstar.com for details and limitations.    ⁷Read the vehicle Owner's Manual for important feature limitations and information.    ⁸Certain features require a SiriusXM subscription and the GMC Connected Access plan. See siriusxm.com and onstar.com for details and limitations. If you decide to continue service after your trial, the subscription plan you choose will automatically renew thereafter and you will be charged according to your chosen payment method at then-current rates. Fees and taxes apply. See the SiriusXM Customer Agreement at siriusxm.com for complete terms and how to cancel. All fees, content, features and availability are subject to change. ©2020 SiriusXM Radio, Inc. SiriusXM, Automatic, Pandora and all related logos are trademarks of SiriusXM Radio, Inc., and its respective subsidiaries.    ⁹OnStar plan, working electrical system, cell reception and GPS signal required. OnStar links to emergency services. See onstar.com for details and limitations.    ¹⁰App functionality and features vary with vehicle equipment and trim level and require available Max Trailering Package. Data connection may be required. Some features require active service plan and working electrical system. User terms and limitations apply.    ¹¹Cargo and load capacity limited by weight and distribution.    ¹²Requires available Max Trailering Package. Before you buy a vehicle or use it for trailering, carefully review the trailering section of the Owner's Manual. The weight of passengers, cargo and options or accessories may reduce the amount you can tow.





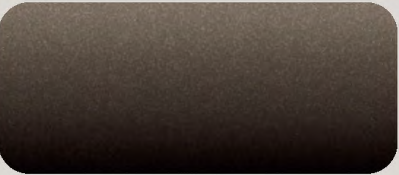
# FIND YOUR TRUE COLORS

## EXTERIOR COLORS

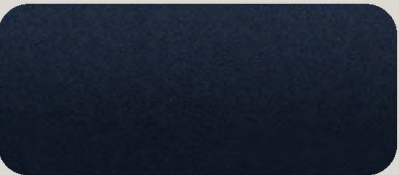
SLE, SLT, AT4, DENALI



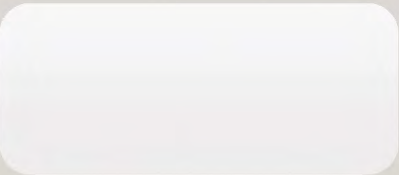
CAYENNE RED TINTCOAT<sup>1</sup>



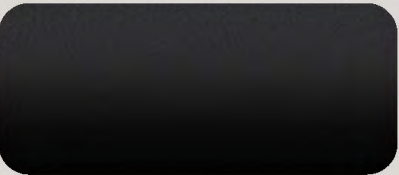
SMOKEY QUARTZ METALLIC<sup>1</sup>



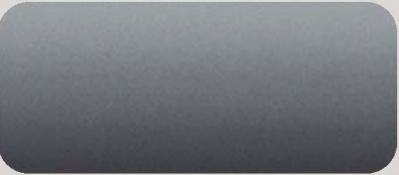
MIDNIGHT BLUE METALLIC<sup>1</sup>



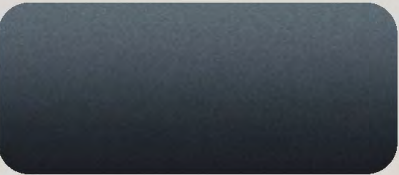
SUMMIT WHITE



ONYX BLACK<sup>1</sup>

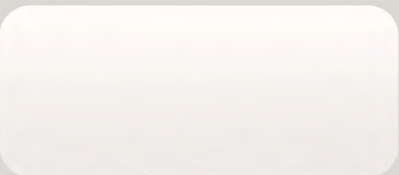


SATIN STEEL METALLIC<sup>1</sup>



DARK SKY METALLIC<sup>1</sup>

SLT, AT4, DENALI



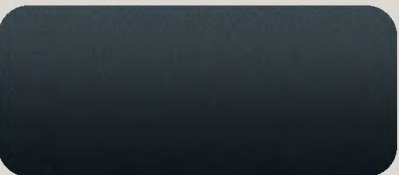
WHITE FROST TRICOAT<sup>1</sup>

SLE, SLT, DENALI



PEARL BEIGE METALLIC<sup>1</sup>

DENALI

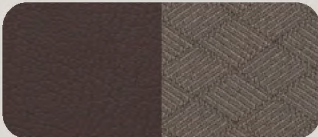


HUNTER METALLIC<sup>1</sup>

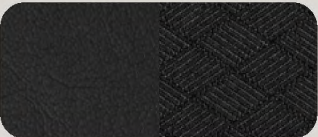
<sup>1</sup>Extra-cost color.

## INTERIOR COLORS

SLE



DARK WALNUT/SLATE CLOTH



JET BLACK/JET BLACK CLOTH

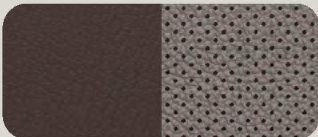


KAITAIN LINE TONE

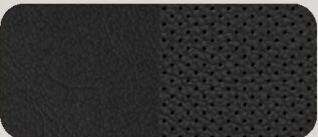


AEGIS PATTERNED ALUMINUM

SLT



DARK WALNUT/SLATE FRONT PERFORATED LEATHER SEATING SURFACES



JET BLACK/JET BLACK FRONT PERFORATED LEATHER SEATING SURFACES

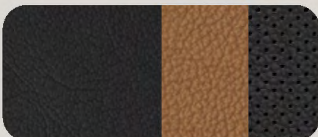


CALADAN TONE



AEGIS PATTERNED ALUMINUM

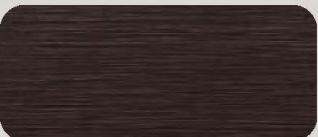
AT4



JET BLACK/JET BLACK FRONT PERFORATED LEATHER SEATING SURFACES WITH BRANDY ACCENTS

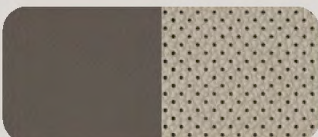


TECHNICAL APPEARANCE

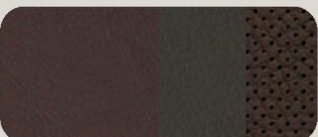


DARK BRUSHED ALUMINUM

DENALI



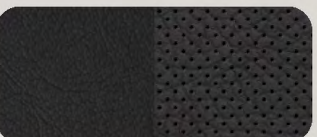
TEAK/LIGHT SHALE FRONT PERFORATED LEATHER SEATING SURFACES



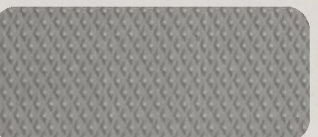
DARK WALNUT/VERY DARK ASH GRAY FRONT PERFORATED LEATHER SEATING SURFACES



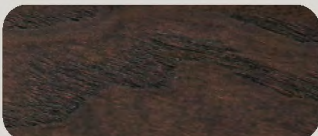
BROWNSTONE/JET BLACK FRONT PERFORATED LEATHER SEATING SURFACES



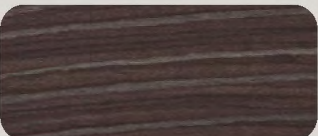
JET BLACK/JET BLACK FRONT PERFORATED LEATHER SEATING SURFACES



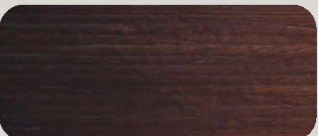
ATREIDES PATTERNED ALUMINUM



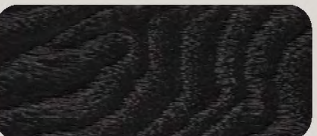
PANDION ASH WOOD



GALLINAGO PLANK WOOD



ACCIPITER OMBRE WOOD



ANHINGA ASH WOOD



PRECISION-CRAFTED  
FROM THE GROUND UP



18" 6-Spoke Machined Aluminum With Dark Gray Metallic Accents (UHN)  
Standard on SLE

18"



20" 6-Spoke Polished Aluminum (NZG)  
Standard on SLT;  
Available on SLE

20" 6-Spoke Machined Aluminum With Carbon Gray Metallic Accents (NZH)  
Standard on AT4

20" 6-Spoke Multidimensional Polished Aluminum (RTL)  
Standard on Denali

20"

22"

22" Bright Machined Aluminum With Premium Paint (RPU)  
Available on Denali







# JUST YOUR STYLE



■ ACCESSORY FIRST-ROW PREMIUM ALL-WEATHER FLOOR LINER

■ MULTIPLE ACCESSORIES SHOWN HERE: ACCESSORY CHROME MIRROR COVERS, 22" MULTI-SPOKE CHROME WHEELS,<sup>1</sup> ILLUMINATED MIRROR GMC EMBLEM AND FRONT SPLASH GUARD

■ MULTIPLE ACCESSORIES SHOWN HERE: ACCESSORY ROOF RACK CROSS RAILS AND THULE ROOF-MOUNTED CARGO BOX

■ ACCESSORY INTEGRATED CARGO LINER

GMC Accessories are a great way to personalize your Yukon—inside and out. They're designed and engineered to meet the Professional Grade standards of your Yukon, as well as your own. We also offer accessories from a lineup of other renowned and proven manufacturers.

Find a full selection of Yukon accessories at [gmc.com/accessories](https://gmc.com/accessories).

<sup>1</sup>Late availability accessory wheels shown. Use only GM-approved tire and wheel combinations. See [gmc.com/accessories](https://gmc.com/accessories) for important tire and wheel information, or see your dealer.



Multiple accessories shown here: accessory roof rack cross rails and Thule roof-mounted ski and snowboard carrier.





# POWERED BY PROFESSIONAL GRADE



SIERRA HEAVY DUTY

CANYON

SIERRA 1500

YUKON

TERRAIN

ACADIA

Preproduction models shown. Actual production models may vary. Sierra HD Denali color, Hunter Metallic, is late availability. Terrain Denali in Graphite Gray Metallic is limited late availability.



NEW VEHICLE LIMITED WARRANTY

**3-YEAR/36,000-MILE BUMPER-TO-BUMPER LIMITED WARRANTY** GMC will warrant each 2021 Yukon from bumper to bumper for 3 years/36,000 miles (whichever comes first; see dealer for details), with no deductible, from the original in-service date of the vehicle, for warrantable repairs that are required as a result of defects due to materials and/or workmanship. Cosmetic corrosion resulting from defects is also covered under the Bumper-to-Bumper Limited Warranty. In addition, rust-through corrosion will be covered for 6 years/100,000 miles (whichever comes first; see dealer for details).

**POWERTRAIN LIMITED WARRANTY** Every 2021 GMC Yukon comes with a 5-year/60,000-mile (whichever comes first) transferable Powertrain Limited Warranty. 24/7 Roadside Assistance and Courtesy Transportation are also offered for the duration of the Powertrain Limited Warranty. Please see your GMC dealer for details.

ONSTAR AND GMC CONNECTED SERVICES

Connected vehicle services vary by vehicle model and require working electrical system, cell reception and GPS signal. Requires active service plan. OnStar links to emergency services. See onstar.com for details and limitations.

GMC CERTIFIED SERVICE

To help your Yukon live up to its performance promise, GMC Certified Service—found exclusively at your GMC dealer—is there. With all the engineering excellence in Yukon, GM-trained technicians have the expertise to help care for it.

ADDITIONAL NOTES

**A NOTE ON CHILD SAFETY** Always use seat belts and the correct child restraint for your child’s age and size, even with airbags. Even in vehicles equipped with the Passenger Sensing System, children are safer when properly secured in a rear seat in the appropriate infant, child or booster seat. Never place a rear-facing infant restraint in the front seat of any vehicle equipped with an active frontal airbag. See the Owner’s Manual and the child safety seat instructions for more safety information.

**TRAILERING AND OFF-ROAD DRIVING INFORMATION** Please go to gmc.com and carefully review the vehicle Owner’s Manual for important safety information about trailering or off-road driving in your vehicle.

**FLEET ORDERS** Some standard content may be deleted on fleet orders. See dealer for details.

**ENGINES** GMC products are equipped with engines produced by GM Powertrain or other suppliers to GM worldwide. The engines in GMC products may also be used in other GM makes and models.

**GMC.COM** See more of Yukon on our website: gmc.com/yukon. More photos and information; hot links to related subjects; convenient dealer locator; pricing guide; spec out your own vehicle. Or call 1-800-GMC-8782.

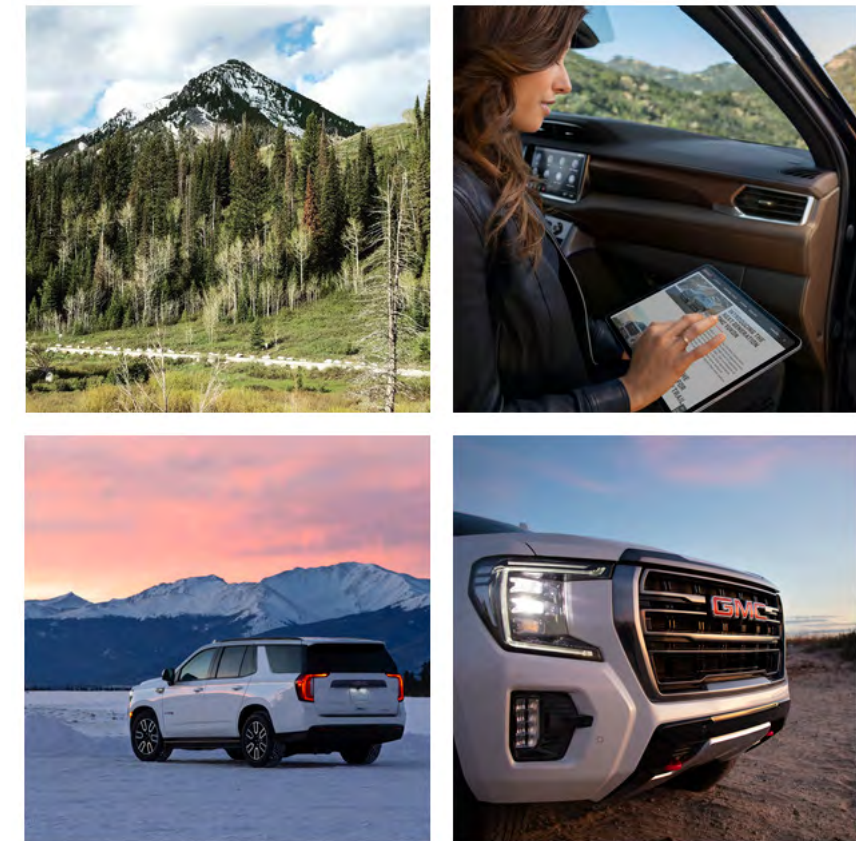
**IMPORTANT WORDS ABOUT THIS CATALOG** We have tried to make this catalog comprehensive and factual. We reserve the right, however, to make changes at any time, without notice, in prices, colors, materials, equipment, specifications, models and availability. Specifications, dimensions, measurements, ratings and other numbers in this catalog and other printed materials provided at the dealership or affixed to vehicles are approximations based on design and engineering drawings, prototypes and laboratory tests. Your vehicle may differ due to variations in manufacture and equipment. Since some information may have been updated since the time of printing, please check with your GMC dealer for complete details. GMC reserves the right to lengthen or shorten the model year for any product for any reason or to start and end model years at different times. Certain vehicle features may lose their usefulness over time due to obsolescence from technological changes. Unless otherwise noted, all claims based on GM Large SUV segment and latest available competitive information at the time of printing. Excludes other GM vehicles.

**AN IMPORTANT NOTE ABOUT ALTERATIONS AND WARRANTIES** Installations or alterations to the original equipment vehicle (or chassis) as distributed by General Motors are not covered by the General Motors New Vehicle Limited Warranty. The special body company, assembler, equipment installer or upfitter is solely responsible for warranties on the body or equipment and any alterations (or any effect of the alterations) to any of the parts, components, systems or assemblies installed by GM. General Motors is not responsible for the safety or quality of design, features, materials or workmanship of any alterations by such employers.

**ASSEMBLY** GMC vehicles and their components are assembled or produced by different operating units of General Motors, its subsidiaries or suppliers to GM worldwide. We sometimes find it necessary to produce GMC vehicles with different or differently sourced components than originally scheduled. Since some options may be unavailable when your vehicle is assembled, we suggest you verify that your vehicle includes the equipment you ordered and that, if there were changes, they are acceptable to you.

**GMMOBILITY.COM** (1-800-323-9935) GM Mobility offers financial assistance for eligible adaptive equipment to make automotive travel easier for persons with disabilities or special transportation needs. To learn more about special GM Mobility offers, visit gmmobility.com.

©2020 General Motors. All rights reserved. GM, the GM logo, GMC, the slogans, emblems, vehicle model names, vehicle body designs and other marks appearing in this catalog are the trademarks and/or service marks of General Motors, its subsidiaries, affiliates or licensors. Facebook is a registered trademark of Facebook, Inc. Twitter is a registered trademark of Twitter, Inc. YouTube is a registered trademark of Google LLC. Instagram is a registered trademark of Instagram, LLC. Sirius, XM and all related marks and logos are trademarks of SiriusXM Radio, Inc. Android Auto is a trademark of Google LLC. Apple, CarPlay, iPhone and Siri are registered trademarks of Apple, Inc.



GMC.COM | #GMC | #LIKEAPRO | #GMCYUKON

